

# Burmatex®

MANUFACTURERS OF CREATIVE FLOORING 



## go to®



low carbon carpet tiles

go to® jet black, sea blue stripe, sea blue & light grey



# go to®

## Loop pile carpet tiles made in the UK

go to® offers two designs, sixteen plains and four stripe options. The range of colours has been increased to create this attractively practical, versatile and flexible palette.

The refreshed palette of go to® uses **EgoCycle® 75 recycled** solution dyed nylon. This, combined with our **BioBase® recycled** backing produces a low carbon update to this reliable product range.

### eco<sub>2</sub>matters®

We are committed to achieving Net Zero through the continual removal of carbon from our products and processes. We believe that what we do matters, that the ecology of our planet matters, and that **eco<sub>2</sub>matters®**

To find out more visit [www.burmatex.co.uk/eco2matters/](http://www.burmatex.co.uk/eco2matters/)







go to® medium grey stripe

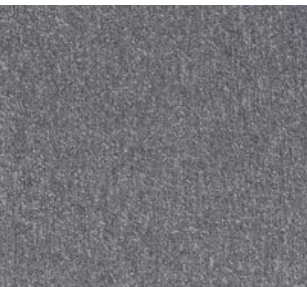


go to® jet black



# colour palette

go to® has 16 plain & 4 stripe colour options



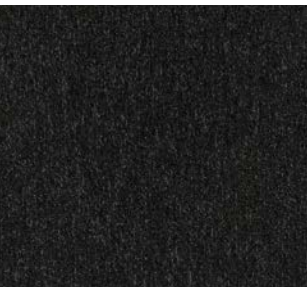
light grey 21817  
LRV: Y 13.98



medium grey 21803  
LRV: Y 9.19



coal grey 21802  
LRV: Y 5.21



jet black 21801  
LRV: Y 3.01



medium grey stripe 21903  
LRV: Y 6.49



light beige 21813  
LRV: Y 21.14



medium beige 21814  
LRV: Y 13.20



dark beige 21815  
LRV: Y 9.07



metal grey 21816  
LRV: Y 6.27



dark beige stripe 21915  
LRV: Y 6.03



green 21811  
LRV: Y 16.80



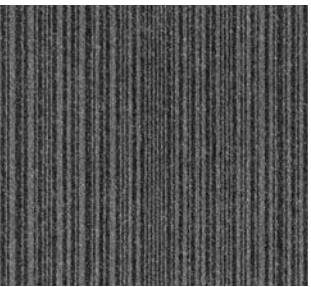
orange 21819  
LRV: Y 12.04



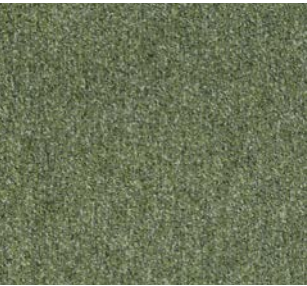
red 21820  
LRV: Y 4.68



purple 21821  
LRV: Y 6.67



coal grey stripe 21902  
LRV: Y 10.36



moss green 21818  
LRV: Y 12.53



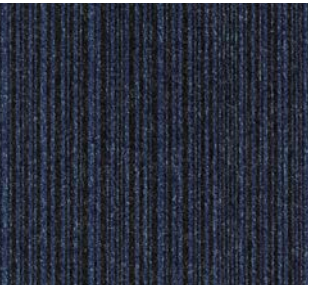
sky blue 21810  
LRV: Y 12.13



sea blue 21806  
LRV: Y 6.45



deep blue 21822  
LRV: Y 5.74



sea blue stripe 21906  
LRV: Y 4.83







eco<sub>2</sub>matters®

Carbon Status:

 low carbon

Yarn Description:

 EqoCycle® 75  
recycled solution dyed nylon

Backing:

 BioBase®  
\* Recycled content BS EN ISO 14021

Global Warming Potential / kg CO<sub>2</sub> eq:

 independently  
3rd party verified 4.26

go to®

Total Recycled Content of Product:

70.0%  
BS EN ISO 14021

Installation Waste:

3-4%  
\* Based on average installation

Wear Classification:

Class 33  
heavy commercial use (BS EN 1307)

Sound Absorption Coefficient:

Class E .02  
BS EN 354:2003

Warranty:

15 years

Colour Palette:

20 options

Castor Chair Rating:

Pass - continuous use  
(BS EN 985)

Impact Sound Insulation:

20dB  
BS EN ISO 10140-3:2010



# Environmental Product Declarations



Independent product specific  
EPD of full life cycle A1 - D



EPDs and independent third party verification are an integral part of our sustainability principles.

# Low Carbon BioBase® backing



Recycled Content

77%

\*minimum content

BioBase® is our low carbon backing system, made using locally sourced recycled organic materials. Combined with 100% organic, non-vinyl polymer binders and fillers.

# Take Back Service



Total Landfill Waste

0%

Working with our partners, we work to find your used carpet tiles a new home, such as helping local community organisations requiring low cost flooring.







go to® medium grey & orange



go to® jet black



# Adhesive Free Installation to Facilitate Flooring Reuse

## Burmatex® achieves circular installation with IOBAC

Adhesive free installation with IOBAC allows carpet tiles to be held securely in place, yet are uplifted cleanly and damage-free, enabling easier reuse and recycling.



Magnetic and dry-tack



Double-sided adhesive



**IOBAC MagTabs®**  
Magnetic on one side and dry-tack on the other, IOBAC MagTabs work by locking carpet tiles tightly together using a unique 2-dimensional grip onto magnetically receptive sub-floors such as access flooring.

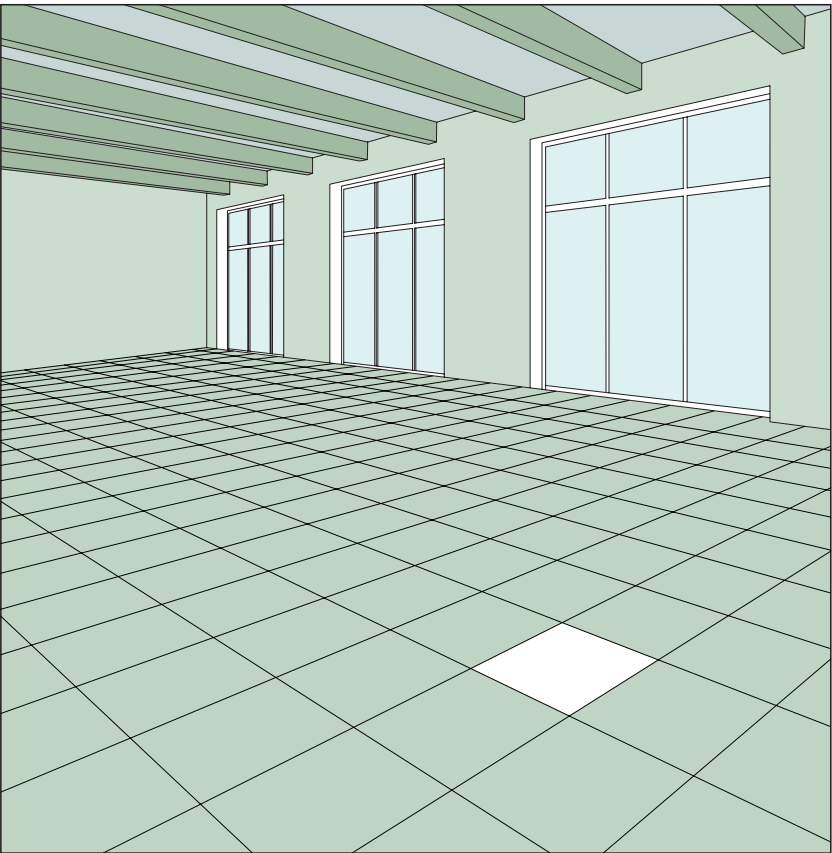


**IOBAC Tab-It®**  
Double-sided dry-tack adhesive tabs for cleanly fixing and uplifting carpet tiles on most prepared sub-floors.

# Design for Deconstruction

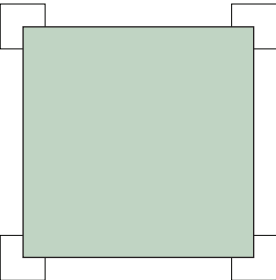
## To enable future reuse, repurposing, or recycling

The Construction industry is currently in transition from a linear path to a circular economy, but this process is still at an early stage. Design Deconstruction plays a vital role in a buildings’ circularity and a considered approach in selective dismantlement of building components for prevision of its future reuse, repurposing or indeed recycling, is imperative in this change.



- Supportive measures:**
- Products supported by specific, full LCA EPD’s
  - Products with low GWP
  - Products that are Carbon Neutral\*
  - Products with high recycled content ISO 14021
  - Products with recyclable components
  - Products compatible with reuse and circular installation

The different colours show different building materials that can be deconstructed and treated seperately.

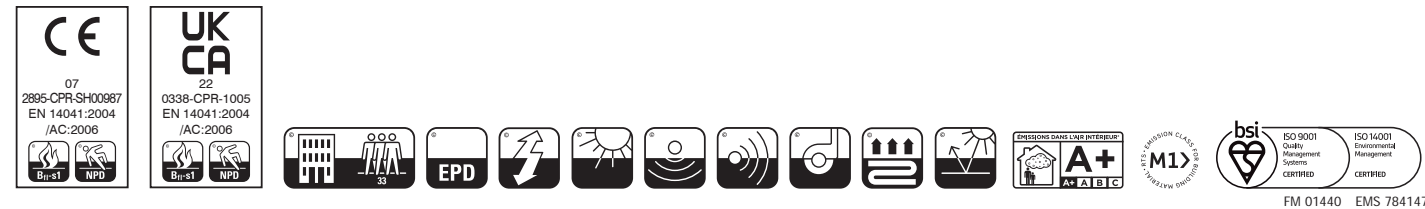


→ **IOBAC MagTabs® and Tab-It®** enable carpet tiles to be uplifted cleanly and damage-free, enabling easier reuse and recycling.



# technical specification

<b>Yarn</b>	EqoCycle® 75 recycled solution dyed nylon
<b>Dimensions</b>	50cm x 50cm
<b>Pile Weight</b>	500g/m²
<b>Total Weight</b>	3810g/m²
<b>Total Thickness</b>	5.5mm
<b>Backing</b>	BioBase® recycled backing (recycled BS EN ISO 14021)
<b>Wear Classification</b>	Class 33 heavy commercial use (BS EN 1307)
<b>Castor Chair Rating</b>	Pass - continuous use (BS EN 985)
<b>Flammability</b>	Euroclass Bfl-s1
<b>Static Loading</b>	BS 4939: 1987 (2003) Recovery >80% (24hrs)
<b>Reduction in Impact Noise</b>	BS EN ISO 10140-3:2010 20dB
<b>Warranty</b>	15 years
<b>Tiles per Box</b>	20 (5m²)

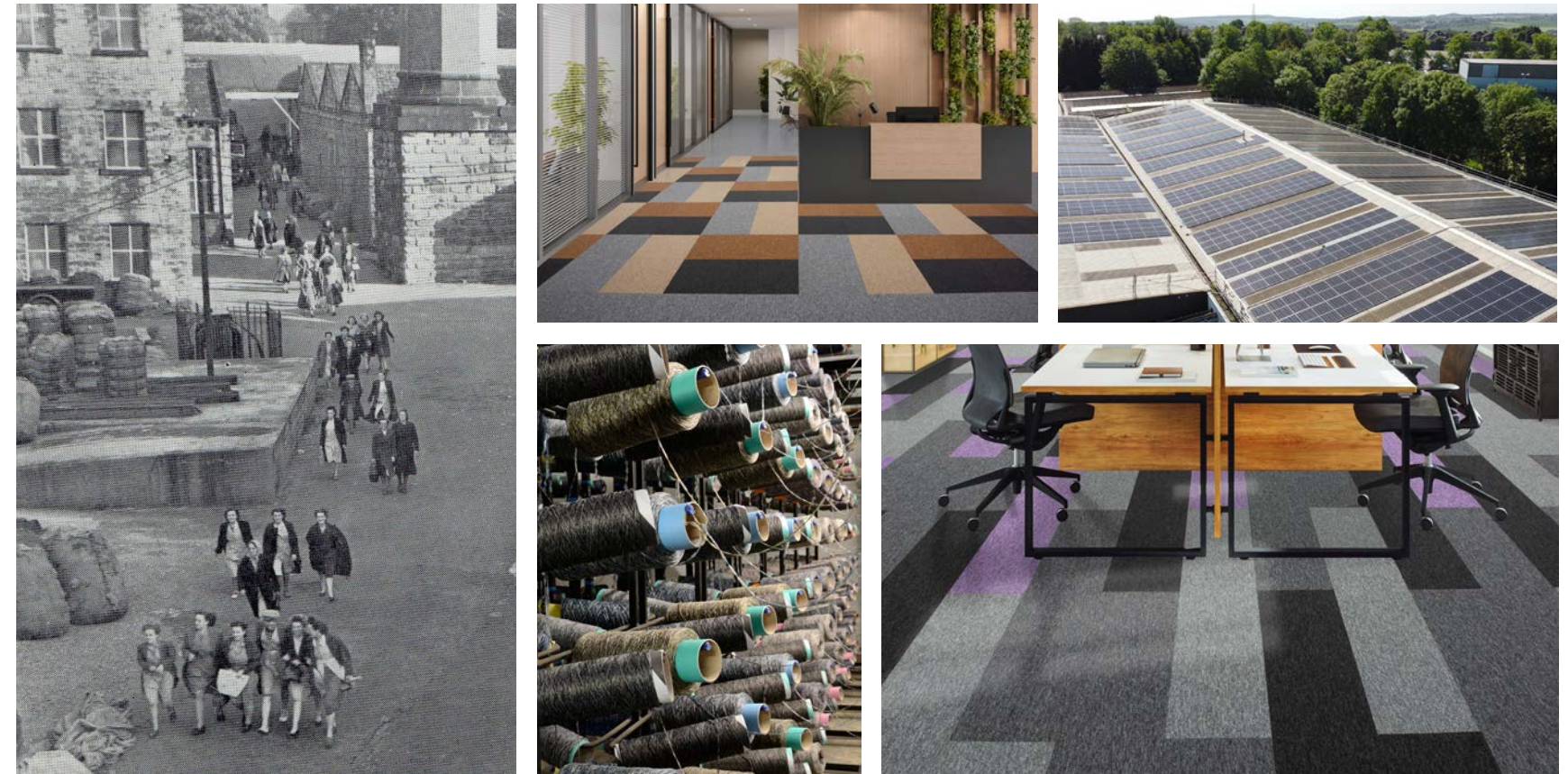


## 17 Burmatex®

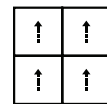
# Burmatex®

**MANUFACTURERS OF CREATIVE FLOORING** 

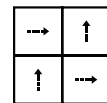
**Burmatex®**, created in 1967, is one of the UK's leading designers and manufacturers of contract carpet tiles. Our eco friendly portfolio focuses on the design and creation of innovative products to meet the needs of architects, specifiers and contractors. Get in touch to discuss our design service for your project.

**Installation Method:**

go to

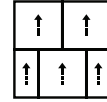


monolithic

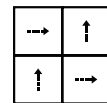


quarter turn

go to stripe



brick



quarter turn



## Head Office

Victoria Mills, The Green  
Ossett  
West Yorkshire  
WF5 0AN  
United Kingdom

Tel: +44 (0) 1924 262525  
Email: [projects@burmatex.co.uk](mailto:projects@burmatex.co.uk)

**[www.burmatex.co.uk](http://www.burmatex.co.uk)**

Made from **eco laminate** and **100% recyclable paper**

Issue: September 2025