

Burmatex®

MANUFACTURERS OF CREATIVE FLOORING 



academy®

low carbon carpet tiles & sheet

February 2024

extremely durable broad ribbed carpet



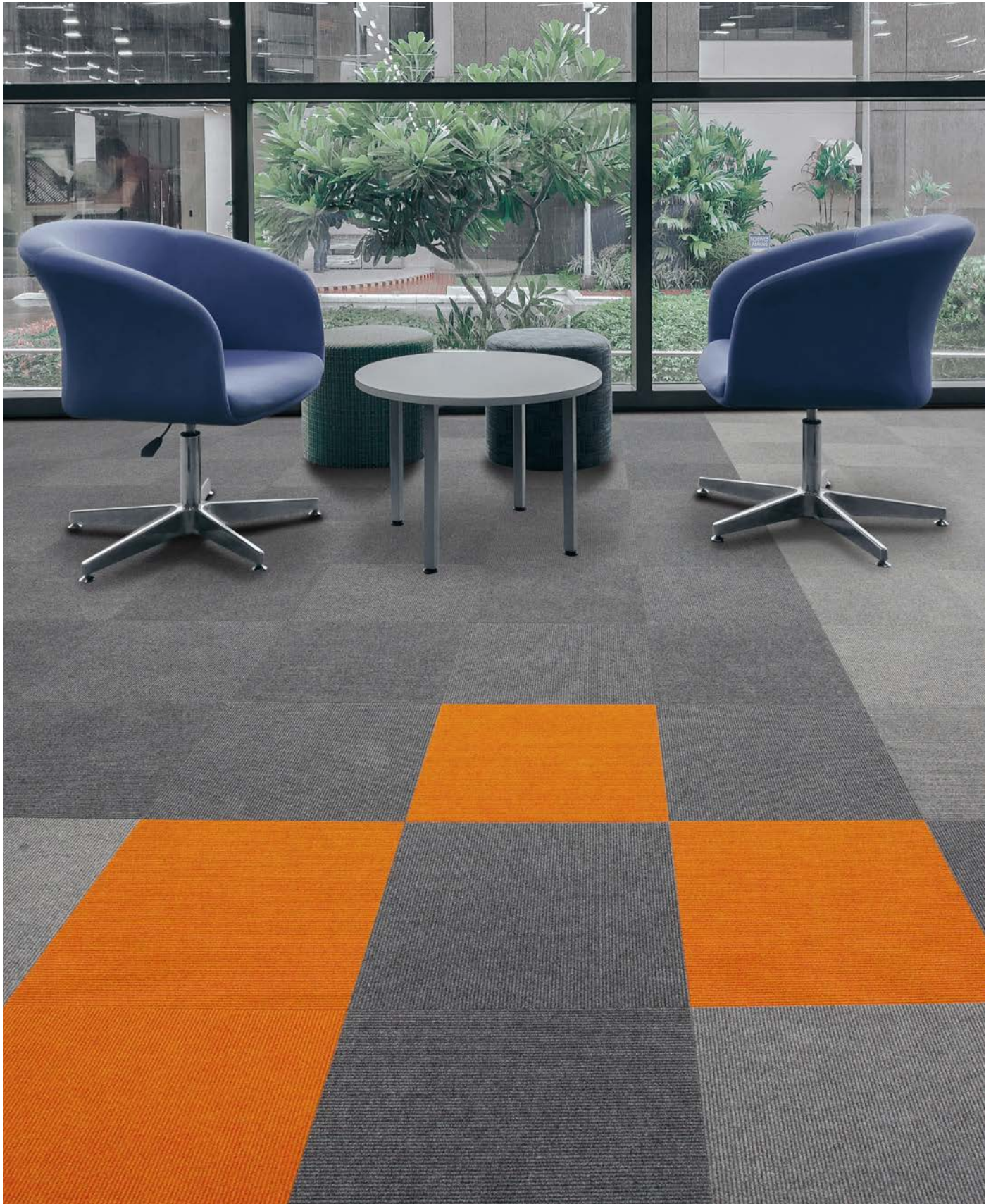
Made from solution dyed fibres including 5% recycled polyester and our unique **BioBase®** recycled backing, **academy®** is low carbon.

academy® is an extremely durable broad ribbed carpet, available in tile or sheet making it easy to maintain, and features anti-fray/anti-ravel technology.

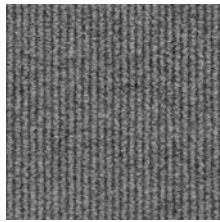
The palette of 24 colours is an ideal choice for use in schools, colleges and universities, perfect for heavy footfall environments.



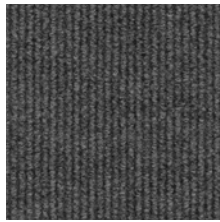
for use in schools and colleges



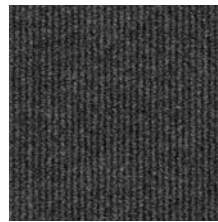
academy® colour palette



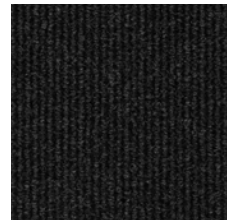
diamond grey
LRV: Y 10.38



grey cloud
LRV: Y 5.25



charcoal grey
LRV: Y 3.45



ebony slate
LRV: Y 2.03



storm grey
LRV: Y 8.99



denim blue
LRV: Y 7.14



ink blue
LRV: Y 2.71



midnight sky
LRV: Y 2.27



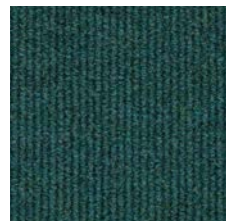
horizon blue
LRV: Y 7.61



atlantis blue
LRV: Y 3.99



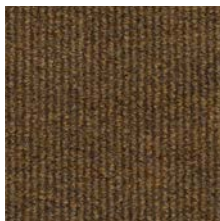
sapphire blue
LRV: Y 3.44



turquoise blue
LRV: Y 4.92



honey beige
LRV: Y 11.83



sandy beige
LRV: Y 7.48



earth brown
LRV: Y 4.51



sage green
LRV: Y 8.16



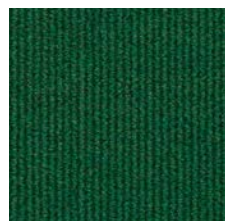
saffron yellow
LRV: Y 21.24



tangerine orange
LRV: Y 14.14



lime green
LRV: Y 9.42



emerald green
LRV: Y 4.87



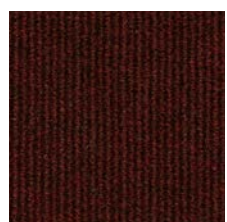
lilac iris
LRV: Y 6.16



dark violet
LRV: Y 2.78

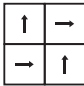


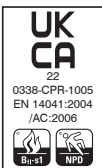
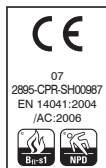
purple orchid
LRV: Y 3.72



cherry red
LRV: Y 2.93

technical specifications

	tiles		sheet
Fibre Composition	80% Polypropylene 15% Nylon 5% Recycled Polyester	 quarter turn	80% Polypropylene 15% Nylon 5% Recycled Polyester
Dimensions	50cm x 50cm		30m x 2m
Pile Weight	950g/m ²		
Total Weight	4200g/m ²		950g/m ²
Total Thickness	7.8mm		6mm
Backing	BioBase® recycled backing (recycled BS EN ISO 14021)		
Wear Classification	Heavy Contract		Heavy Contract
Castor Chair Rating	Pass - continuous use (BS EN 985)		Pass - continuous use (BS EN 985)
Flammability	Euroclass Bfl-s1		Euroclass Bfl-s1
Static Loading	BS 4939: 1987 (2003) Recovery >80% (24hrs)		BS 4939: 1987 (2003) Recovery >80% (24hrs)
Reduction in Impact Noise	BS EN ISO 10140-3:2010 18dB		BS EN ISO 10140-3:2010 18dB
Warranty	15 years		15 years
Number of Tiles per Box	20 (5m ²)		



eco₂matters®

We are committed to helping deliver a sustainable future, because we believe that what we do **matters**. To help us deliver on this commitment, we have developed **eco₂matters®**, our sustainability principles, supported by independent 3rd party verification.



**Journey to
Net Zero
& Beyond**



**Positive
Environmental
Impact**



**Social Values
& Well Being**

Made from solution dyed fibres including 5% recycled polyester and our unique **BioBase®** recycled backing, **academy®** is **low carbon**. The extremely durable broad ribbed carpet, available in tile or sheet making it easy to maintain, and features **anti-fray** and **anti-ravel** technology. The palette of 24 colours is an ideal choice for use in schools, colleges and universities, perfect for heavy footfall environments.



**low
carbon**

academy®
is **low carbon**



**anti fray
anti ravel**

academy® features
anti-fray/anti-ravel technology



**BioBase®
backing**

academy® tiles use **BioBase®**
recycled backing



**take back
service**

Burmatex® reco₂very take back
service provides a no landfill
solution for your used tiles



**100% certified
renewable**

Burmatex® products are
made using 100% certified
renewable electricity



**independently
3rd party verified**

eco₂matters® declarations
are independently 3rd party
verified

EPD

Burmatex® products are supported
by 3rd party independently verified,
product specific EPD's

LEED

Burmatex® products
contribute towards Leed
accreditation

SKA

Burmatex® products
adhere to SKA standards

WELL Building Standards

Burmatex® products contribute
to WELL Building Standards



need a BIM object?

all our products
have BIM objects
available on our website

For more information about
academy® low carbon carpet tiles
Visit **www.burmatex.co.uk/academy**

Need **advice**? Help with the **design**?
Call your Business Area Manager

Need a go to shadecard or samples?



Scan the QR code
Call +44 (0) 1924 262525
Email samples@burmatex.co.uk

Burmatex®

MANUFACTURERS OF CREATIVE FLOORING 

KEEP IN TOUCH



Burmatex Ltd
Victoria Mills, The Green,
Ossett, West Yorkshire
WF5 0AN