

burmatex® is committed to protecting the environment, and as a company we will apply our belief in respecting and protecting the environment to all phases of our business.

It is our goal to develop products, services, packaging and processes which are compatible with the environment and beneficial in their use and manageable in their disposal.

burmatex® will strive for continual improvement in environmental performance, will reduce the amount of productive waste for product output and frequently review our objectives/targets.

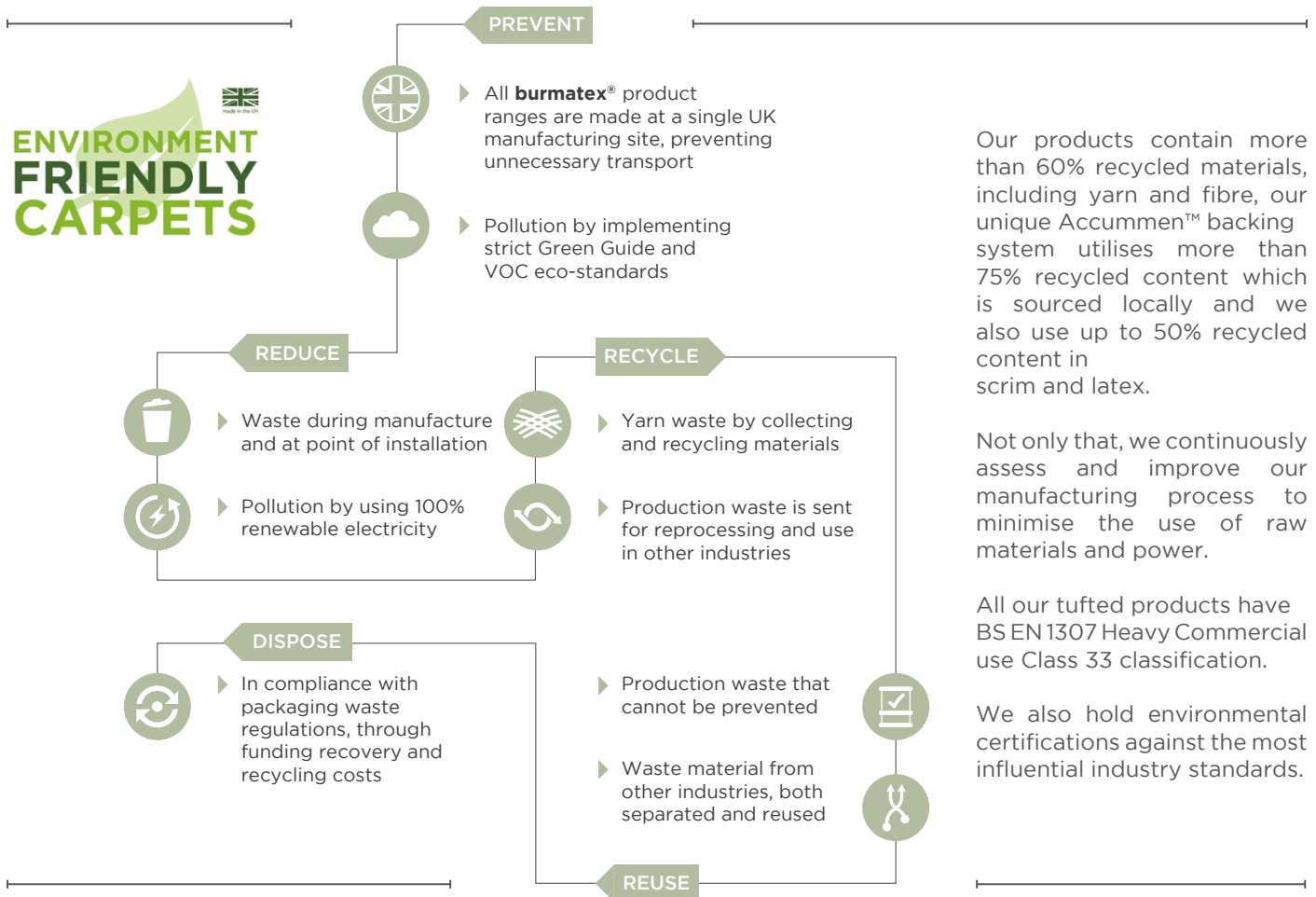


environmental information

- burmatex® products are EPD verified by an independent third-party verification of the declaration and data, according to ISO 14025:2006. For specific ratings, please refer to www.environdec.com
- burmatex® products qualify for SKA as they achieve one or more requested criteria
- burmatex® products can contribute to the WELL Building Standard™, which focuses on the people and healthy workspaces
- All burmatex® carpet/carpet tile/carpet plank ranges are made at its single UK manufacturing site
- Wherever possible, raw materials including yarn/fibre are sourced locally i.e. within 20 miles
- Over 75% of burmatex® Accumen™ backing comes from recycled materials
- Continuous assessment and improvement of manufacturing process to minimise use of raw materials/ power
- All manufacturing waste is recycled and all electricity used is from renewable resources
- All burmatex® products are heavy contract with a 10 year guarantee for maximum useful life
- Certified, Class A+: very-low VOC Emission

LEED® v4 - burmatex® products can contribute towards satisfying the following credits for LEED v4: NC-v4/CI-v4 MRc2/MRc3 (Building product disclosure and optimization - environmental product declarations), MRc3/MRc4 (Building product disclosure and optimization - sourcing of raw materials), EQc1 (Enhanced indoor air quality strategies), EQc2 (Low-emitting materials), EQc6 (Interior lighting - Option 2. Lighting quality (E - H)) and EQc9 (Acoustic Performance). Products are not reviewed under LEED. LEED credit requirements cover the performance of materials in aggregate, not the performance of individual products or brands. For more information on LEED, visit ww.usgbc.org/contact

With a history influenced by recycling, we're committed to doing our bit to protect the planet. In keeping with our dedication to conserving energy and reducing waste, our flooring solutions are manufactured using 100% renewable electricity.



Our products contain more than 60% recycled materials, including yarn and fibre, our unique Accummen™ backing system utilises more than 75% recycled content which is sourced locally and we also use up to 50% recycled content in scrim and latex.

Not only that, we continuously assess and improve our manufacturing process to minimise the use of raw materials and power.

All our tufted products have BS EN 1307 Heavy Commercial use Class 33 classification.

We also hold environmental certifications against the most influential industry standards.



This floor covering was made with renewable electricity



Certificate Number FM01440
BS EN ISO 9001:2015



Statement on level of emission of volatile substances in indoor air posing a toxic threat during inhaling – on a scale from A+ (very low-emission) to C (high-emission)



The Building Information Foundation, Finland. Certified building materials with low emission class M1



Environmental Product Declaration by independent third-party verification of the declaration and data, according to ISO 14025:2006