



Product Catalogue
Burmatex[®]

MANUFACTURERS OF CREATIVE FLOORING 

arctic[®] blue water, marine ravine, moonrise blue, norse grey

February 2024



We are passionate about making our flooring products and aim to create truly inspirational environments for people to enjoy



Burmatex® offers an expansive product range; our traditional fibre bonded sheet and tile ranges include entrance products and ground-breaking structure bonded ranges, which present an expansive colour palette. Our multilevel loop, low level loop, textured loop and cut pile tufted carpet tile ranges, including a specialist entrance barrier product, are inspired by the latest and predicted future design and colour trends.

Burmatex® is a leading UK manufacturer of contract carpets and carpet tiles. We are passionate about creating truly inspirational environments, reflected in our products unique nature across both design and manufacture.

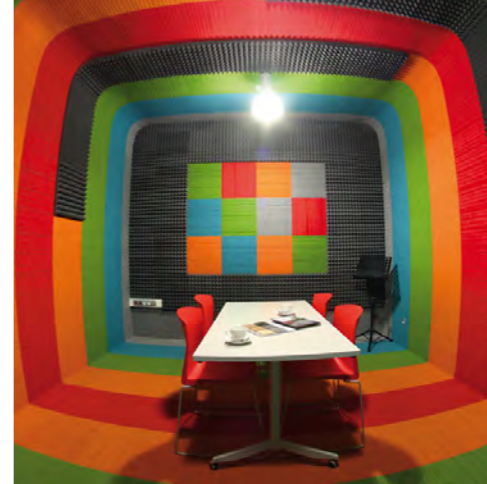
Our products are suitable for use in heavy contract markets and used in a wide variety of private and public sector buildings, including schools, offices, universities and leisure centres.



The **Burmatex**® design team are a driving force in developing product ranges which reflect colour and design trends as well as creating exclusive, bespoke carpet tiles to meet customers' needs and providing our free planned flooring layout design service.



Burmatex® is committed to best environmental practice in our manufacturing, from the sourcing of raw materials, including recycled content, minimising emission of CO₂ and reprocessing waste, use of green electricity and recycled packaging. Our product are now EPD verified by an independent third-party verification of the declaration and data, according to ISO 14025:2006.

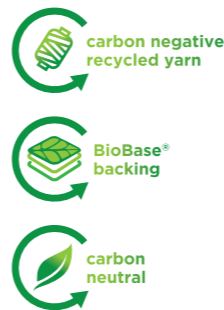
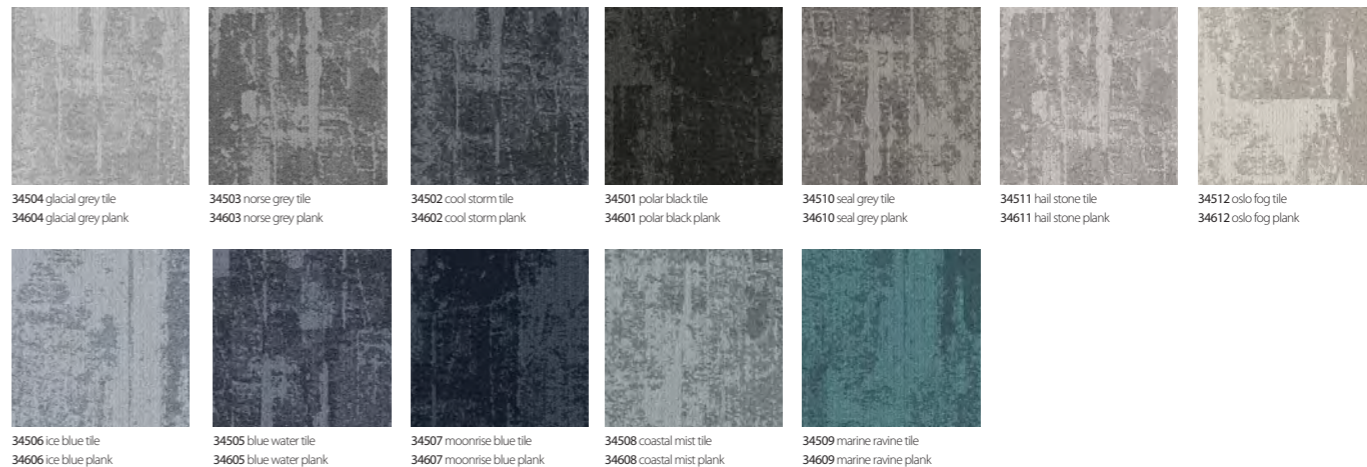


We hope that by reading our catalogue and visiting our website at www.burmatex.co.uk, we will inspire you to work with us to create really unique, captivating floor designs.



Burmatex® is a BS EN ISO 9001:2000 registered company (Cert No.FM1440). All products are tested to BSI/CEN standards in relation to durability, wear, flame retardancy, antistatic properties and colour fastness.





Specification

Product Description: Multilevel Loop
 Pile Yarn Description: Universal Fibers® Thrive® matter yarn
 Tile Dimensions: 50 cm x 50 cm
 Pile Height: 4.5mm
 Total Thickness: 7mm
 Pile Weight: 624g/m²
 Tufts per m²: 26,771/m²
 Castor Chair Rating: BS EN 985 Pass
 Body Voltage Test: BS ISO 6356:2000 <2kV
 Colour Fastness To Light: Minimum grade 6
 Flammability: Euroclass Bfl-s1



arctic® tile/plank

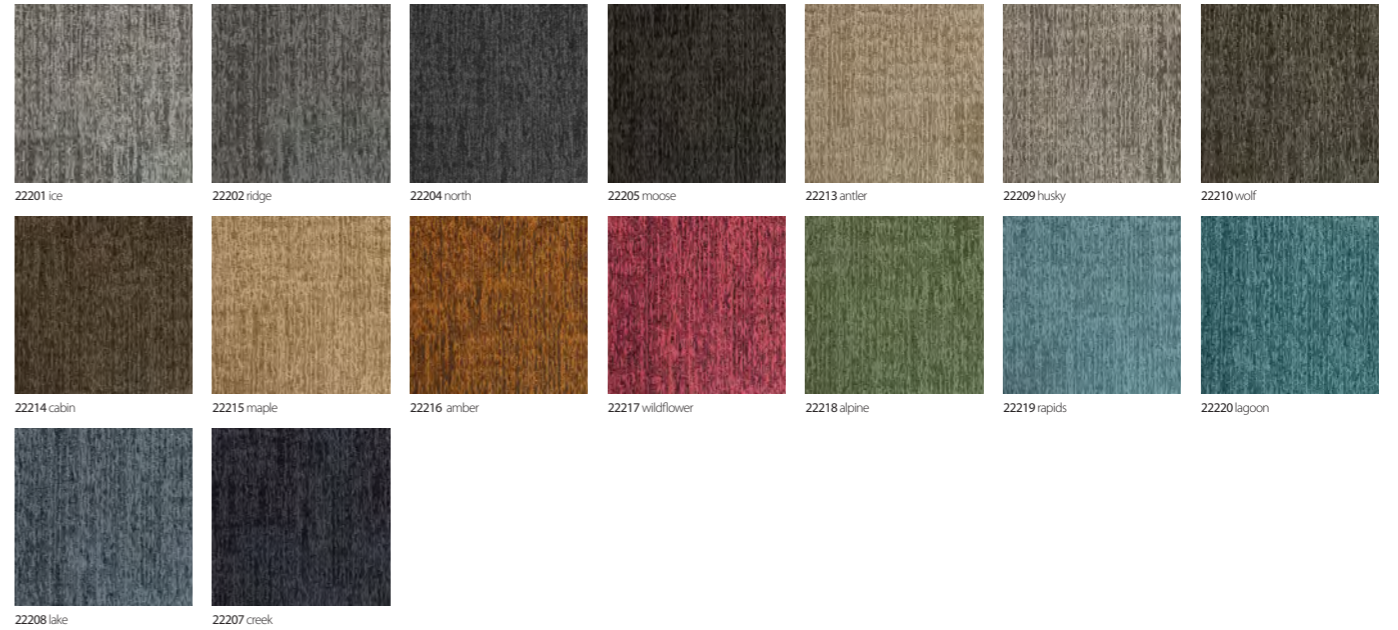
arctic® is inspired by the changing landscape of the Arctic region. Organic lines cutting through icy rock, cold water flowing down frozen mountains and glacial river rapids inspire the movement in the design.

The colour palette consists of 12 colours inspired by the natural elements of the Arctic - ice blues and cool greys amongst soft subtle warms, with marine-like green tones to further enhance the collection.

arctic® is available in both tile and plank, allowing you the freedom to express arctic in either option, creating unique structures and patterns to suit your project.

eco₂matters®

Made from Universal Fibers® Thrive® matter yarn, the world's first **carbon negative recycled** yarn, and our unique **BioBase® recycled** backing, arctic® is **carbon neutral**.



Specification

Product Description: Multilevel Loop
Pile Yarn Description: 100% Econyl® regenerated recyclable solution dyed nylon yarn
Tile Dimensions: 50 cm x 50 cm
Pile Height: 5 mm
Total Thickness: 7.5 mm
Pile Weight: 800 g/m²
Tufts per m²: 226,771/m²
Castor Chair Rating: BS EN 985 Pass
Body Voltage Test: BS ISO 6356:2000 <2kV
Colour Fastness To Light: Minimum grade 6
Flammability: Euroclass Bfl-s1



alaska®

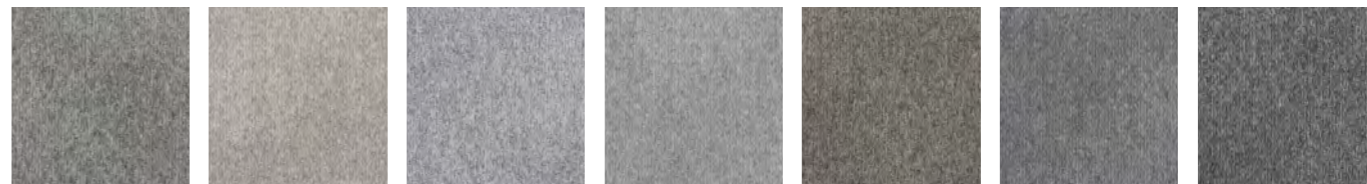
alaska® is our first multilevel loop product and its name was also our inspiration.

alaska® is a timeless and tactile design, inspired by the natural textures found in the Alaskan landscape. The expansive biophilic palette and luxurious rippled effect is an ideal choice for commercial interiors.

alaska® tiles are available in 16 colours.

eco₂matters®

Made from 100% Econyl® regenerated recyclable solution dyed nylon yarn and our unique BioBase® recycled backing, alaska® is low carbon.



34001 steel tower 34002 warm frost 34003 concrete lead 34004 granite vapour 34005 city clay 34006 skylight beam 34011 twilight dawn



34008 urban nickel 34010 sage vista 34007 harbour view 34009 river dew 34012 navy shore



carbon negative
recycled yarn



BioBase®
backing



carbon
neutral

Specification

- Product Description: Multilevel Loop
- Pile Yarn Description: 100% Solution Dyed Nylon 6 (Polyamide-PA)
- Tile Dimensions: 50 cm x 50 cm
- Pile Height: 4.5 mm
- Total Thickness: 7.0 mm
- Pile Weight: 628 g/m²
- Tufts per m²: 226,771/m²
- Castor Chair Rating: BS EN 985 Pass
- Body Voltage Test: BS ISO 6356:2000 <2kV
- Colour Fastness To Light: Minimum grade 6
- Flammability: Euroclass Bfl-s1

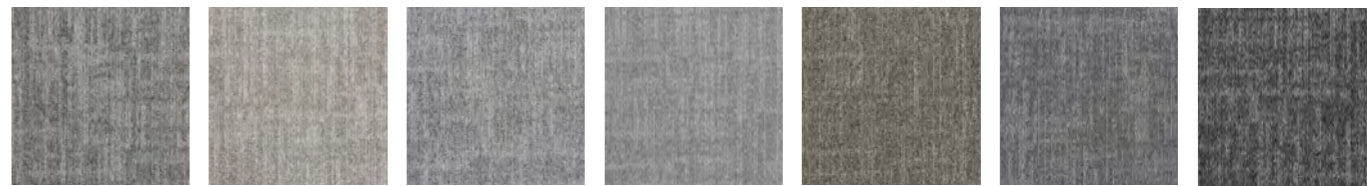


balance grade®

balance grade® is inspired by misty Chicago mornings where the dew is fresh from Lake Michigan. It is a soft and subtle design which leaves a calming effect across the floor. It is complemented by the other two ranges in the balance collection: **balance grid®** and **balance ground®**.

eco²matters®

Made from Universal Fibers® Thrive® matter yarn, the world's first **carbon negative recycled** yarn, and our unique **BioBase® recycled** backing, **balance grade®** is **carbon neutral**.



33901 steel grey 33902 warm dusk 33903 concrete core 33904 granite mesh 33905 smoky clay 33906 skylight chrome 33911 twilight fog



33908 black nickel 33910 sage glass 33907 harbour cloud 33909 river haze 33912 navy night



carbon negative recycled yarn



BioBase® backing



carbon neutral

Specification

- Product Description: Multilevel Loop
- Pile Yarn Description: 100% Solution Dyed Nylon 6 (Polyamide-PA)
- Tile Dimensions: 50 cm x 50 cm
- Pile Height: 4.5 mm
- Total Thickness: 7.0 mm
- Pile Weight: 628 g/m²
- Tufts per m²: 226,771/m²
- Castor Chair Rating: BS EN 985 Pass
- Body Voltage Test: BS ISO 6356:2000 <2kV
- Colour Fastness To Light: Minimum grade 6
- Flammability: Euroclass Bfl-s1

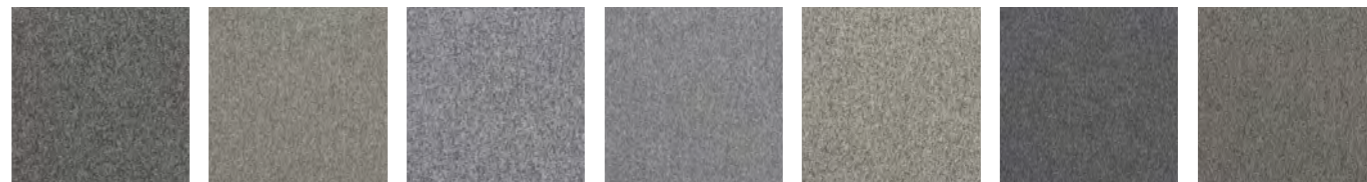


balance grid®

balance grid® is inspired by the strong lines seen in high rise skyscrapers, shining and gleaming. It is a classic yet contemporary design which works alone or paired with the other two designs in the balance collection: **balance grade®** and **balance ground®**.

eco²matters®

Made from Universal Fibers® Thrive® matter yarn, the world's first **carbon negative recycled** yarn, and our unique **BioBase® recycled** backing, **balance grid®** is **carbon neutral**.



34101 steel 34102 warm 34103 concrete 34104 granite 34105 clay 34106 skylight 34108 nickel



34111 twilight 34110 sage 34107 harbour 34109 river 34112 navy



carbon negative
recycled yarn



BioBase®
backing



carbon
neutral

Specification

- Product Description: Multilevel Loop
- Pile Yarn Description: 100% Solution Dyed Nylon 6 (Polyamide-PA)
- Tile Dimensions: 50 cm x 50 cm
- Pile Height: 4.5 mm
- Total Thickness: 7.0 mm
- Pile Weight: 628 g/m²
- Tufts per m²: 226,771/m²
- Castor Chair Rating: BS EN 985 Pass
- Body Voltage Test: BS ISO 6356:2000 <2kV
- Colour Fastness To Light: Minimum grade 6
- Flammability: Euroclass Bfl-s1

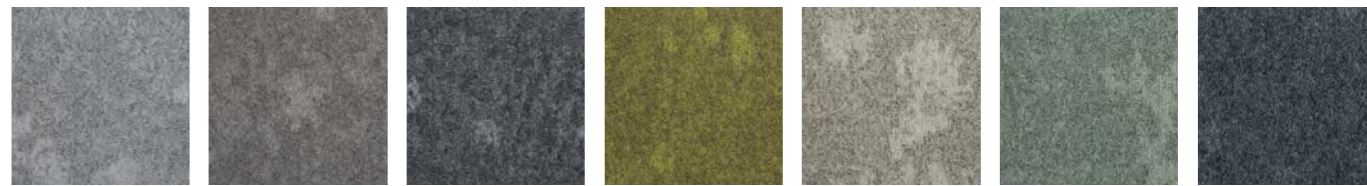


balance ground®

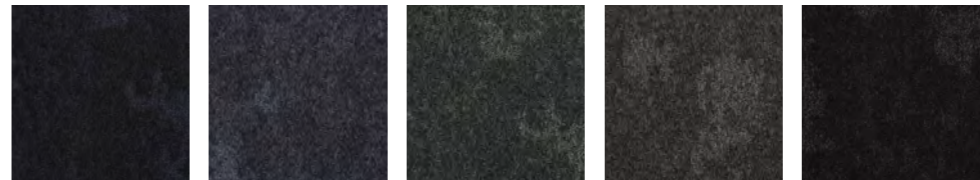
balance ground® is inspired by the rough texture of sidewalks and pavements that run throughout the city of Chicago. It is strong in tactile elements but soft in colour, designed to give your space some breathing room. When used in conjunction with **balance grid®** and **balance grade®** it is grounding and neutral.

eco₂matters®

Made from Universal Fibers® Thrive® matter yarn, the world's first **carbon negative recycled** yarn, and our unique **BioBase® recycled** backing, **balance ground®** is **carbon neutral**.



34301 silver gleam 34302 cool breeze 34303 grey zephyr 34304 golden hour 34305 spring seed 34306 airy celadon 34307 luminous blue



34308 vivid navy 34309 midnight violet 34310 inky shade 34311 moonlit glow 34312 dark nimbus



carbon negative recycled yarn



BioBase® backing



carbon neutral

Specification

- Product Description: Multilevel Loop
- Pile Yarn Description: Universal Fibers® Thrive® matter yarn
- Tile Dimensions: 50 cm x 50 cm
- Pile Height: 5.2 mm
- Total Thickness: 7.0 mm
- Pile Weight: 678 g/m²
- Tufts per m²: 236,220/m²
- Castor Chair Rating: BS EN 985 Pass
- Body Voltage Test: BS ISO 6356:2000 <2kV
- Colour Fastness To Light: Minimum grade 6
- Flammability: Euroclass Bfl-s1

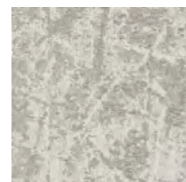


dapple®

dapple®'s organic design echoes the effect of light being filtered through trees and scattered onto the forest floor. Inspired by nature, the 12 colour palette helps you connect your built interior to the natural environment.

eco₂matters®

Made from Universal Fibers® Thrive® matter yarn, the world's first carbon negative recycled yarn, and our unique BioBase® recycled backing, dapple® is carbon neutral.



22813 hikari



22802 sesame



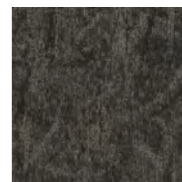
22809 mochi



22805 arashi



22814 kurmo



22803 sumi



22819 kori



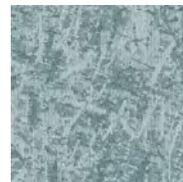
22816 sora



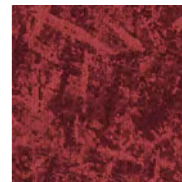
22818 chiru



22817 ginkgo



22815 kawa



22820 hanabi



Specification

- Product Description:** Multilevel Loop
- Pile Yarn Description:** Universal Fibers® Thrive® matter yarn
- Tile Dimensions:** 50 cm x 50 cm
- Pile Height:** 5 mm
- Total Thickness:** 7.5 mm
- Pile Weight:** 695 g/m²
- Tufts per m²:** 226,771/m²
- Castor Chair Rating:** BS EN 985 Pass
- Body Voltage Test:** BS ISO 6356:2000 <2kV
- Colour Fastness To Light:** Minimum grade 6
- Flammability:** Euroclass Bfl-s1



osaka®

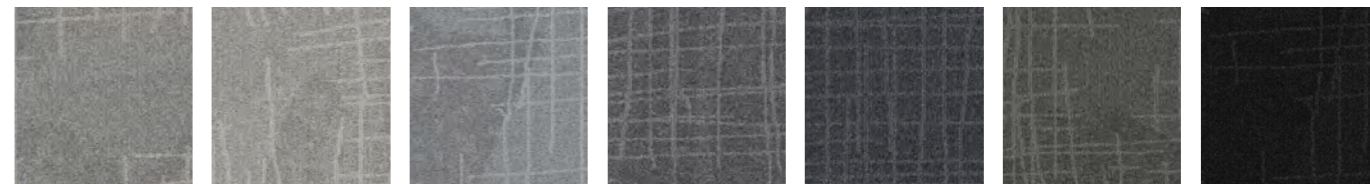
osaka® is an all over pattern inspired by an incredibly vibrant, futuristic, and traditional part of the world, Japan. The contrasts found in Japan inspire the range; new and old, warm and cool, urban and natural.

Initially inspired by a map of Osaka the carpet tile design is geometric yet organic, reminiscent of folded paper origami. Whether looking down on the busy metropolitan streets or up at the forest canopies, you can see the pattern of **osaka®** appear in both city and natural settings.

The abstract nature of the design, teamed with the revived colour palette, allows it to be both soft and strong, expertly working with modern interior spaces.

eco²matters®

Made from Universal Fibers® Thrive® matter yarn, the world's first **carbon negative recycled** yarn, and our unique **BioBase® recycled** backing, **osaka®** is carbon neutral.



31906 grey linen 31908 cotton canvas 31901 silk white 31902 silver pear 31903 after dark 31904 crushed cord 31905 liquorice lace



31910 golden slice 31911 minty mesh 31912 deep pistachio 31907 blue velvet 31909 satin sapphire



Specification

- Product Description:** Multilevel Loop
- Pile Yarn Description:** 100% Solution Dyed Nylon 6 (Polyamide-PA)
- Tile Dimensions:** 50 cm x 50 cm
- Pile Height:** 5mm
- Total Thickness:** 7.5 mm
- Pile Weight:** 774 g/m²
- Tufts per m²:** 250,393/m²
- Castor Chair Rating:** BS EN 985 Pass
- Body Voltage Test:** BS ISO 6356:2000 <2kV
- Colour Fastness To Light:** Minimum grade 6
- Flammability:** Euroclass Bfl-s1



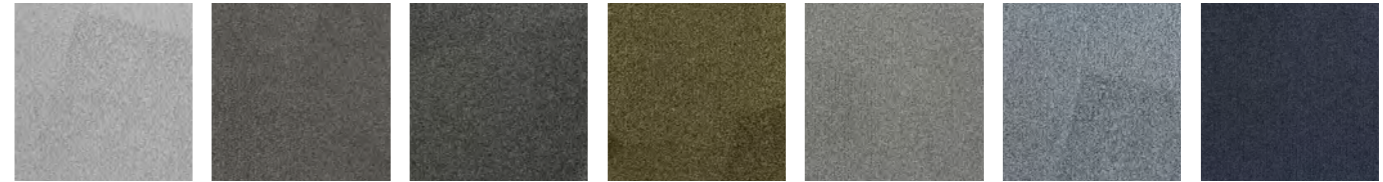
vibe®

vibe® is inspired by torn netted structures with areas of strong pattern breaking away into sections of plain. Whilst the grid is the main feature of the design, underneath are subtle broken shapes created from torn and folded papers. This building of layers within the design creates a luxurious, velvet like appearance.

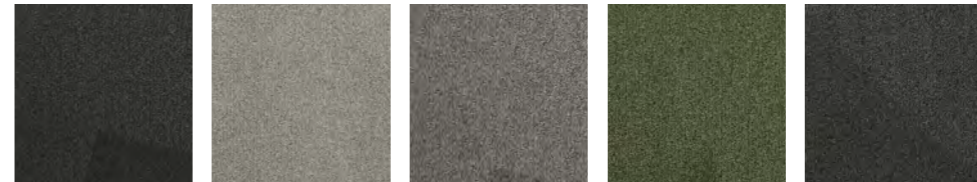
The vibrant palette of 12 colours provides colour on grey and tonal options. The four core greys make up the background to the colour on greys with the grid pattern taking the colour. From pastel tones to bright pops of highlight, is it suitable for all manner of interiors and installations.

eco₂matters®

Made from 100% Solution Dyed Nylon 6 and our unique **BioBase® recycled** backing, **vibe®** is **low carbon**.



34201 silver pitch 34202 zinc facet 34203 grey horizon 34204 gold patina 34205 light angle 34206 sky tint 34207 blue facade



34208 coal layer 34209 clay screen 34210 metal edge 34211 green space 34212 ash profile



Specification

- Product Description:** Multilevel Loop
- Pile Yarn Description:** 100% Solution Dyed Nylon 6 (Polyamide-PA)
- Tile Dimensions:** 50 cm x 50 cm
- Pile Height:** 5 mm
- Total Thickness:** 7.5 mm
- Pile Weight:** 770 g/m²
- Tufts per m²:** 259,842/m²
- Castor Chair Rating:** BS EN 985 Pass
- Body Voltage Test:** BS ISO 6356:2000 <2kV
- Colour Fastness To Light:** Minimum grade 6
- Flammability:** Euroclass Bfl-s1

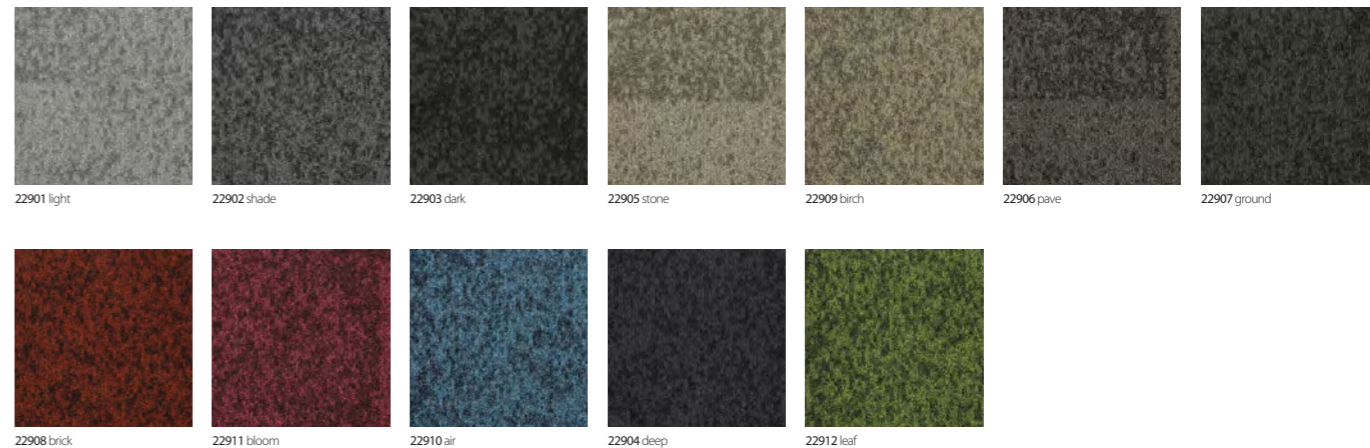


tiltnturn®

tiltnturn® is a 770g product which reflects the amazing effects of light and shadow which surround us every day. The design and the colour palette are inspired by how light catches different planes within architectural structures, creating changing shadows and varying lines.

eco₂matters®

Made from 100% Solution Dyed Nylon 6 and our unique BioBase® recycled backing, tiltnturn® is low carbon.



Specification

Product Description: Multilevel Loop
Pile Yarn Description: 100% Solution Dyed Aquafil Econyl® Nylon (Polyamide-PA)
Tile Dimensions: 50 cm x 50 cm
Pile Height: 5 mm
Total Thickness: 7.5 mm
Pile Weight: 910 g/m²
Tufts per m²: 236,220/m²
Castor Chair Rating: BS EN 985 Pass
Body Voltage Test: BS ISO 6356:2000 <2kV
Colour Fastness To Light: Minimum grade 6
Flammability: Euroclass Bfl-s1



rainfall®

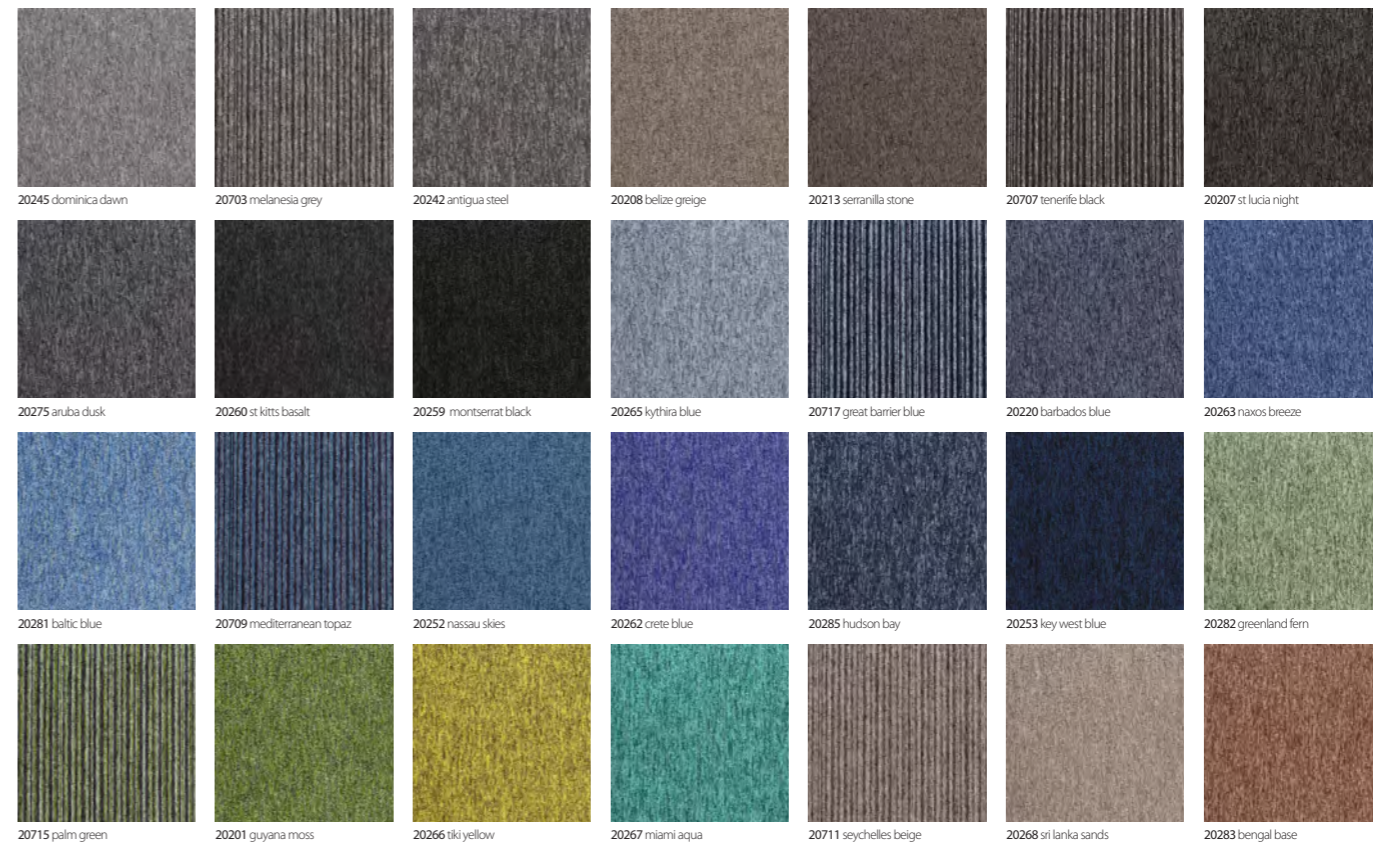
rainfall®'s inspiration was trying to capture those first moments of a summer storm. The first spots of rain punctuate the surface, gathering in intensity until the whole colour is several shades darker.

This multilevel loop product encompasses changes of tone in varying proportions throughout, resulting in an all over effect of subtlety combined with soft angles.

These characteristics ensure that each installation of appears slightly different from the last. An enticing palette of 12 colours provides bright and light options, through to more concentrated and atmospheric tones, suitable for all manner of installations and interiors.

eco²matters®

Made from 100% **Econyl® regenerated recyclable** solution dyed nylon yarn and our unique **BioBase® recycled** backing, rainfall® is **low carbon**.



Specification

Product Description: Low Level Loop
 Pile Yarn Description: EqoBalance® sustainable yarn, solution dyed nylon
 Tile Dimensions: 50 cm x 50 cm
 Total Thickness: 6.5 mm
 Pile Weight: 600 g/m²
 Tufts per m²: 196.500/m²
 Castor Chair Rating: BS EN 985 Pass
 Body Voltage Test: BS ISO 6356:2000 <2kV
 Colour Fastness To Light: Minimum grade 6
 Flammability: Euroclass Bfl-s1



tivoli® tile

Comprised of **tivoli®** and **tivoli® multiline** the options for floor design are endless. With a coordinated colour palette of 40 and Class 33, this enduring collection is suitable for use in a wide variety of commercial interiors.

eco₂matters®

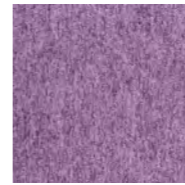
Made from **EqoBalance®** sustainable yarn and our unique **BioBase® recycled** backing, **tivoli®** is **low carbon**.



20284 tasmanian rock



20246 tobago sands



20276 tropic purple



20714 hawaiian purple



20277 pink paradise



20254 puerto rico purple



20270 pinta purple



20716 volcanic flame



20278 capetwon clay



20279 madagascar orange



20280 cuban brown



20273 rio red



Specification

Product Description: Low Level Loop

Pile Yarn Description: EqoBalance® sustainable yarn, solution dyed nylon

Tile Dimensions: 50 cm x 50 cm

Total Thickness: 6.5 mm

Pile Weight: 600 g/m²

Tufts per m²: 196.500/m²

Castor Chair Rating: BS EN 985 Pass

Body Voltage Test: BS ISO 63562:2000 <2kV

Colour Fastness To Light: Minimum grade 6

Flammability: Euroclass Bfl-s1



tivoli® tile (cont).

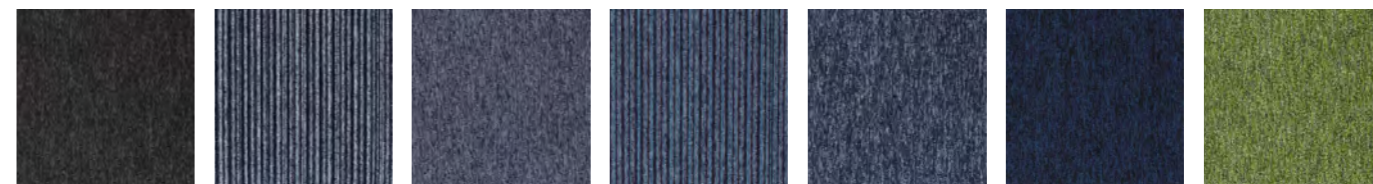
Comprised of **tivoli®** and **tivoli® multiline** the options for floor design are endless. With a coordinated colour palette of 40 and Class 33, this enduring collection is suitable for use in a wide variety of commercial interiors.

eco₂matters®

Made from **EqoBalance®** sustainable yarn and our unique **BioBase® recycled** backing, **tivoli®** is **low carbon**.



21145 dominica dawn 20703 melanesia grey 21142 antigua steel 21108 belize greige 21207 tenerife black 21107 st lucia night 21175 aruba dusk



21160 st kitts basalt 21217 great barrier blue 21120 barbados blue 21209 mediterranean topaz 21185 hudson bay 21153 key west blue 21101 guyana moss



21166 tiki yellow 21167 miami aqua 21211 seychelles beige 21168 sri lanka sands 21176 tropic purple 21177 pink paradise 21179 madagascan orange

loop pile

Specification

- Product Description: Low Level Loop
- Pile Yarn Description: EqoBalance® sustainable yarn, solution dyed nylon
- Tile Dimensions: 25 cm x 100 cm
- Total Thickness: 6.5 mm
- Pile Weight: 600 g/m²
- Tufts per m²: 196,500/m²
- Castor Chair Rating: BS EN 985 Pass
- Body Voltage Test: BS ISO 63562:2000 <2kV
- Colour Fastness To Light: Minimum grade 6
- Flammability: Euroclass Bfl-s1

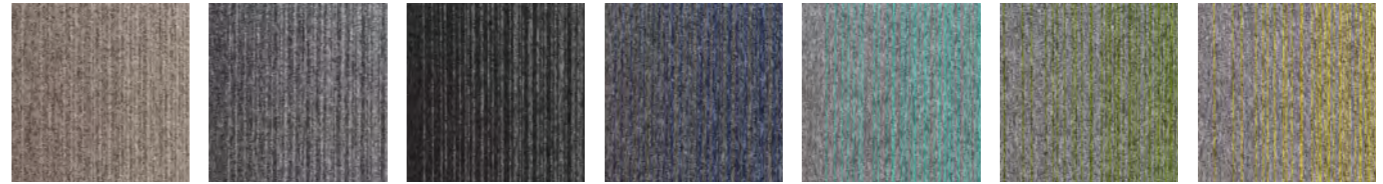


tivoli® plank

tivoli® carpet planks offer two loop pile designs – a solid colour and a stripe **tivoli® multiline**. This creates a broad palette with complementary colours developing creative installation options.

eco₂matters®

Made from **EqoBalance®** sustainable yarn and our unique **BioBase® recycled** backing, **tivoli®** is **low carbon**.



32706 bora bora tile
32906 bora bora plank
32712 polar drift tile
32912 polar drift plank
32713 galapagos bay tile
32913 ogalapagos bay plank
32714 shoreline sail tile
32914 shoreline sail plank
32715 waterfront wave tile
32915 waterfront wave plank
32705 turtle bay tile
32905 turtle bay plank
32701 south beach tile
32901 south beach plank

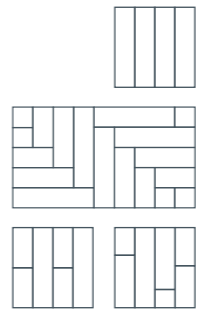
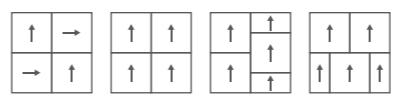


32716 sunset canyon tile
32916 sunset canyon plank
32717 hibiscus haven tile
32917 hibiscus haven plank
32718 island haze tile
32918 island haze plank



Specification

Product Description: Low Level Loop
 Pile Yarn Description: EgoBalance® sustainable yarn, solution dyed nylon
 Tile Dimensions: 50 cm x 50 cm, 25 cm x 100 cm
 Total Thickness: 6.5 mm
 Pile Weight: 600 g/m²
 Tufts per m²: 196.500/m²
 Castor Chair Rating: BS EN 985 Pass
 Body Voltage Test: BS ISO 63562:2000 <2kV
 Colour Fastness To Light: Minimum grade 6
 Flammability: Euroclass Bfl-s1

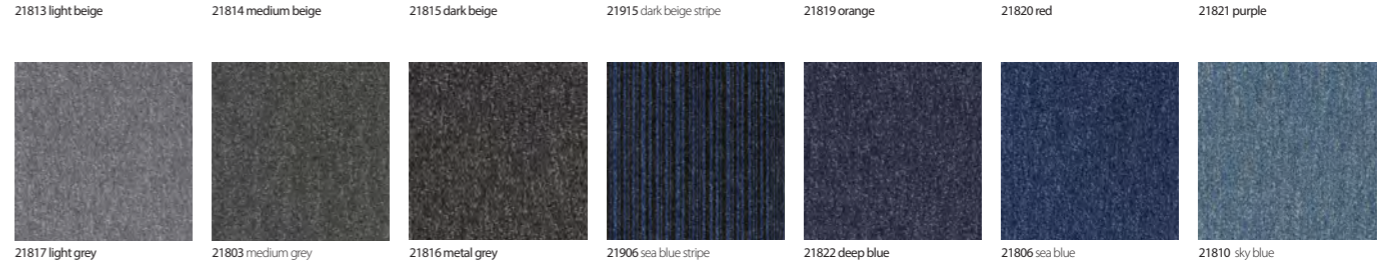


tivoli mist® tile/plank

tivoli mist® offers a flexible range of commercial carpet tiles, designed to provide creativity, colour and individuality. With colour pairings that blend seamlessly together, tivoli mist® affords the possibility of transitioning from one zoned area to another without the use of hard lines.

eco₂matters®

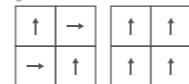
Made from EgoBalance® sustainable yarn and our unique BioBase® recycled backing, tivoli mist® is low carbon.



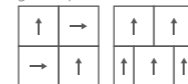
Specification

Product Description: **Low Carbon** Level Loop
 Pile Yarn Description: **EgoCycle® 75 recycled** solution dyed nylon
 Tile Dimensions: 50 cm x 50 cm
 Pile Height: 3.0 mm
 Total Thickness: 5.5 mm
 Pile Weight: 500 g/m²
 Tufts per m²: 196,850/m²
 Castor Chair Rating: BS EN 985 Pass
 Body Voltage Test: BS ISO 6356:2000 <2kV
 Colour Fastness To Light: Minimum grade 6
 Flammability: Euroclass Bfl-s1

go to



go to stripe



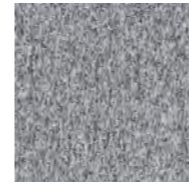
go to[®]

go to[®] offers two designs, sixteen plains and four stripe options. The range of colours has been increased to create this attractively practical, versatile and flexible palette.

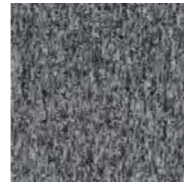
go to[®] has a proven track record of high performance and resilience that **Burmatex[®]** carpet tiles are known for. This core level loop range is the go to choice for use

eco₂matters[®]

go to[®] uses **EgoCycle[®] 75 recycled** solution dyed nylon. This, combined with our **BioBase[®] recycled** backing produces a **low carbon** update to this reliable product range.



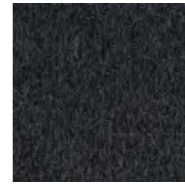
34705 ice mineral



34701 slate grey



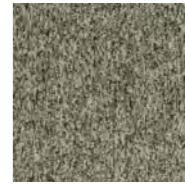
34702 silver salt



34703 stone shadow



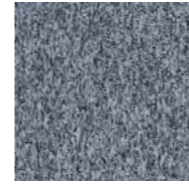
34704 gravel greige



34706 quartz sand



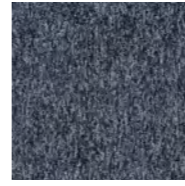
34707 sepia fusion



34712 cold cove



34708 cyan flux



34709 base blue



34710 navy element



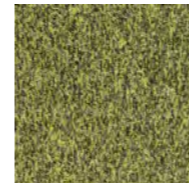
34716 purple prism



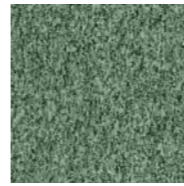
34715 cherry shade



34711 bronze brown



34713 ultra yellow



34714 jade layer



100% Econyl®



BioBase®
backing



low
carbon

Specification

Product Description: **Low Carbon** Level Loop

Pile Yarn Description: 100% **Econyl®** regenerated recyclable solution dyed nylon

Tile Dimensions: 50 cm x 50 cm

Pile Height: 4.3 mm

Total Thickness: 6.8 mm

Pile Weight: 550 g/m²

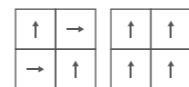
Tufts per m²: 177,165/m²

Castor Chair Rating: BS EN 985 Pass

Body Voltage Test: BS ISO 63562:2000 <2kV

Colour Fastness To Light: Minimum grade 6

Flammability: Euroclass Bfl-s1



infinity®

infinity® is a 550g level loop pile carpet tile collection of 16 shades, inspired by flecked textures and colours found in raw materials and nature. Visual inspiration from rocks, gemstones, coastlines, and minerals help to create the individual aspect of this heavy commercial range. This specific characteristic of the tile provides excellent soil hiding properties..

eco₂matters®

Made from 100% Econyl® regenerated recyclable solution dyed nylon yarn and our unique BioBase® recycled backing, **infinity®** is **low carbon** and a considered choice for sustainable building projects.



low carbon



anti fray anti ravel



BioBase backing

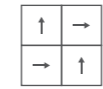
Roll Specification Q.

Product Description: Fibre Bonded
Pile Yarn Description: 80% Polypropylene
 15% Nylon 5% Recycled Polyester
Roll Length: 30m
Roll Width: 2m
Total Thickness: 6 mm
Total Weight: 950 g/m²
Castor Chair Rating: BS EN 985 Pass
Body Voltage Test: BS ISO 6356:2000 <2kV
Colour Fastness To Light: Minimum grade 6
Flammability: Euroclass BF-s1

Q. roll
 □ tile

Tile Specification □

Product Description: Fibre Bonded
Pile Yarn Description: 80% Polypropylene
 15% Nylon 5% Recycled Polyester
Dimensions: 50 cm x 50 cm
Total Thickness: 7.8 mm
Pile Weight: 950 g/m²
Castor Chair Rating: BS EN 985 Pass
Body Voltage Test: BS ISO 6356:2000 <2kV
Colour Fastness To Light: Minimum grade 6
Flammability: Euroclass BF-s1

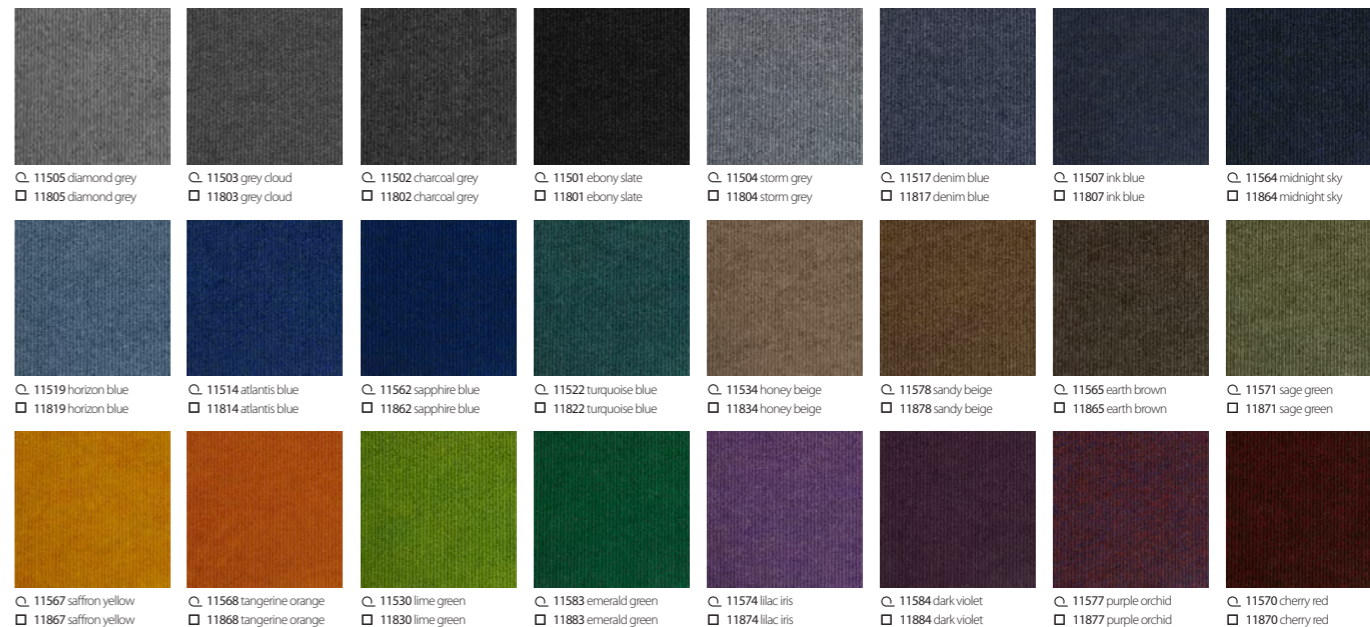


supercordiale®

supercordiale® has a palette of 40 colours is an ideal choice for use in schools, colleges and universities, perfect for heavy footfall environments.

eco₂matters®

Made from solution dyed fibres including 5% recycled polyester and our unique BioBase® recycled backing, supercordiale® is low carbon.



low carbon



anti fray
anti ravel



BioBase®
backing

Roll Specification

Product Description: Fibre Bonded
Pile Yarn Description: 80% Polypropylene, 15% Nylon, 5% Recycled Polyester
Roll Length: 30m
Roll Width: 2m
Total Thickness: 5.5 mm
Total Weight: 940 g/m²
Castor Chair Rating: BS EN 985 Pass
Body Voltage Test: BS ISO 6356:2000 <2kV
Colour Fastness To Light: Minimum grade 6
Flammability: Euroclass Bfl-s1

roll

tile

Tile Specification

Product Description: Fibre Bonded
Pile Yarn Description: 80% Polypropylene, 15% Nylon, 5% Recycled Polyester
Dimensions: 50 cm x 50 cm
Total Thickness: 7.5 mm
Pile Weight: 940 g/m²
Castor Chair Rating: BS EN 985 Pass
Body Voltage Test: BS ISO 6356:2000 <2kV
Colour Fastness To Light: Minimum grade 6
Flammability: Euroclass Bfl-s1

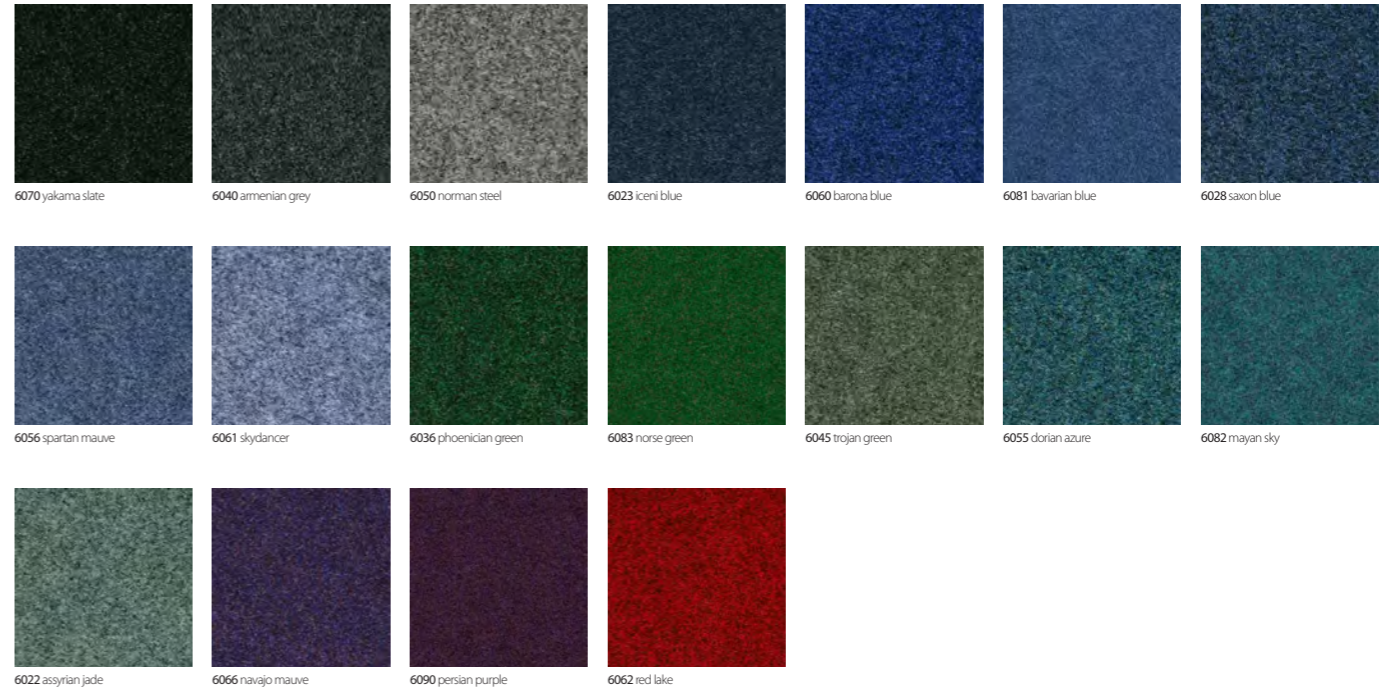


academy[®]

academy[®] is an extremely durable broad ribbed fibre bonded carpet tile and is particularly suited for public buildings, such as schools, and other commercial interiors. Made from a high performance mix of solution dyed fibres, it is available in a wide range of 24 exciting colourways.

eco₂matters[®]

Made from solution dyed fibres including 5% recycled polyester and our unique BioBase[®] recycled backing, academy[®] is low carbon.



Specification

Product Description: Fibre Bonded
Pile Yarn Description: 85% Polypropylene 15% Nylon
Roll Length: 30m
Roll Width: 2m
Total Thickness: 6.5 mm
Total Weight: 1150 g/m²
Castor Chair Rating: BS EN 985 Pass
Body Voltage Test: BS ISO 6356:2000 <2kV
Colour Fastness To Light: Minimum grade 6
Flammability: Euroclass Dfl-s1

Specification

Product Description: Fibre Bonded
Pile Yarn Description: 85% Polypropylene 15% Nylon
Tile Dimensions: 50 cm x 50 cm
Total Thickness: 10 mm
Pile Weight: 1200 g/m²
Castor Chair Rating: BS EN 985 Pass
Body Voltage Test: BS ISO 6356:2000 <2kV
Colour Fastness To Light: Minimum grade 6
Flammability: Euroclass Bfl-s1



velour excel

velour excel is an extremely durable fibre bonded carpet tile, ideally suited for public buildings, such as schools, and other commercial interiors. Made from a high performance mix of solution dyed fibres, it is available in a choice of 18 attractive colourways.

5500 luxury

5500 is an extremely durable fibre bonded carpet sheet, ideally suited for public buildings, such as schools, and other commercial interiors. Made from a high performance mix of solution dyed fibres, it is available in a choice of 18 attractive colourways.



1834 soap stone



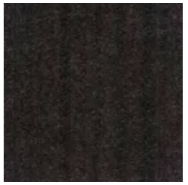
1891 pewter cloud



1805 diamond dust



1803 concrete jungle



1802 zinc asphalt



1801 carbon steel



1809 ink stone



1814 blue monday



1813 lavender oil



1890 purple emperor



1886 pink diamond



1812 indigo snake



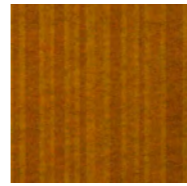
1882 turquoise mountain



1883 emerald coast



1830 lime street



1887 gold quest



1839 mandarin duck



1845 scarlet runner



BioBase[®]
backing



anti fray
anti ravel



low
carbon

Specification

Product Description: Structure Bonded[®]

Pile Yarn Description: 85% Polypropylene 15% Nylon

Tile Dimensions: 50 cm x 50 cm

Total Thickness: 7.8 mm

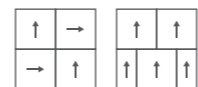
Pile Weight: 950 g/m²

Castor Chair Rating: BS EN 985 Pass

Body Voltage Test: BS ISO 6356:2000 <2kV

Colour Fastness To Light: Minimum grade 6

Flammability: Euroclass Bfl-s1



structure bonded[®]

lateral[®]

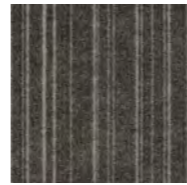
lateral[®] is the definitive product offering for all commercial interiors, schools, public buildings, residential schemes and design and build projects. **lateral[®]**'s ground-breaking design stems from our innovative, structure bonded manufacturing technology using an unusual mix of textures from cut through to loop pile. It is available in a range of 18 colours.

eco₂matters[®]

Made from anti fray and anti ravel technology with our unique **BioBase[®] recycled** backing, **lateral[®]** is **low carbon** and a considered choice for sustainable building projects.



12912 cool stone



12926 pewter track



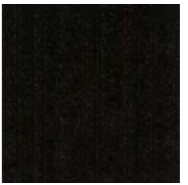
12930 diamond coal



12906 metal shock



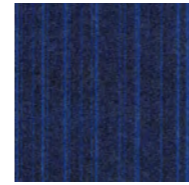
12928 night suede



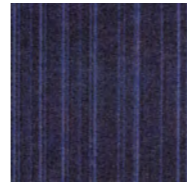
12929 pitch black



12923 ink film



12927 blue reef



12924 lavender seed



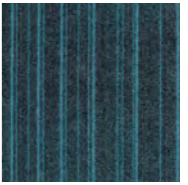
12920 deep purple



12916 pink panther



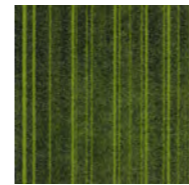
12931 indigo stack



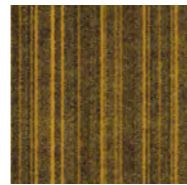
12922 turquoise opal



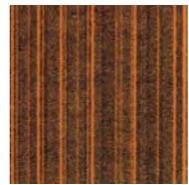
12925 emerald city



12902 lime zest



12918 rolled gold



12901 sun burst



12904 scarlet fever



BioBase®
backing



anti fray
anti ravel



low
carbon

Specification

Product Description: Structure Bonded®

Pile Yarn Description: 85% Polypropylene 15% Nylon

Tile Dimensions: 50 cm x 50 cm

Total Thickness: 8.0 mm

Pile Weight: 1000 g/m²

Castor Chair Rating: BS EN 985 Pass

Body Voltage Test: BS ISO 6356:2000 <2kV

Colour Fastness To Light: Minimum grade 6

Flammability: Euroclass Bfl-s1



structure bonded®

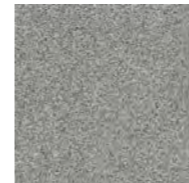
code

code is the next generation in structure-bonded® design, evolving from the technology that created lateral®.

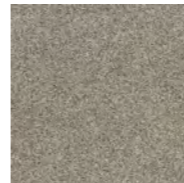
code uses subtle contrasting stripes of colour and texture for a stylish defined look. Combine **code** with zip and lateral® to produce a unique floor design.

eco₂matters®

Made from anti fray and anti ravel technology with our unique **BioBase® recycled backing**, **code®** is **low carbon** and a considered choice for sustainable building projects.



33201 cloud



33202 pearl



33203 pebble



33204 shale



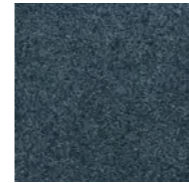
33205 mussel



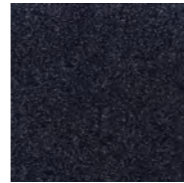
33206 gull



33207 gorse



33208 surf



33209 wave



33210 heather



100% Econyl®



BioBase® backing



low carbon

Specification

Product Description: Cut Pile

Pile Yarn Description: 100% Solution Dyed Aquafil Econyl® Nylon (Polyamide-PA)

Tile Dimensions: 50 cm x 50 cm

Pile Height: 7 mm

Total Thickness: 9.5 mm

Pile Weight: 1300 g/m²

Tufts per m²: 1 653 354/m²

Castor Chair Rating: BS EN 985 Pass

Body Voltage Test: BS ISO 6356:2000 <2kV

Colour Fastness To Light: Minimum grade 6

Flammability: Euroclass Bfl-s1



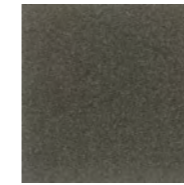
origin®

origin® is a sophisticated and plush range, working as a stand-alone product as well as with other carpet tiles in our collection, such as **osaka®**, **rainfall®** and **alaska®**.

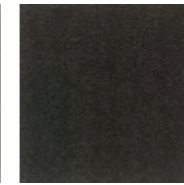
The new colouration of **origin®** was inspired by coastal themes and forecasted colour trends. Organic and natural, the colour palette is usable, classic and clean. Looking to the colour names chosen, you can clearly see the oceanic inspiration: fresh and crisp surf, deep and dramatic wave, smooth pebble and atmospheric cloud, to name a few in the palette of 10.

eco₂matters®

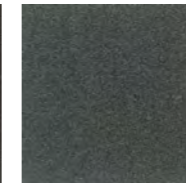
Made from 100% Econyl® **regenerated recyclable** solution dyed nylon yarn and our unique **BioBase® recycled** backing, **origin®** is **low carbon** and a considered choice for sustainable building projects.



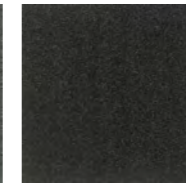
18701 graphite



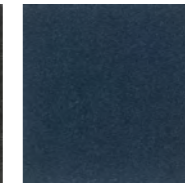
18702 graphite stripe



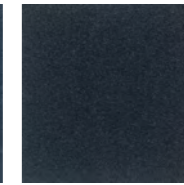
18704 sterling



18705 sterling stripe



18707 cobalt



18708 cobalt stripe



protects



100% Econyl®



BioBase®
backing



low
carbon

Specification

Product Description: Performance Barrier System

Pile Yarn Description: 100% Solution Dyed Nylon (Polyamide-PA)

Tile Dimensions: 50 cm x 50 cm

Total Thickness: 10.0 mm

Pile Weight: 920 g/m²

Tufts per m²: 110.236/m²

Castor Chair Rating: BS EN 985 Pass

Body Voltage Test: BS ISO 6356:2000 <2kV

Colour Fastness To Light: Minimum grade 6

Flammability: Euroclass Bfl-s1

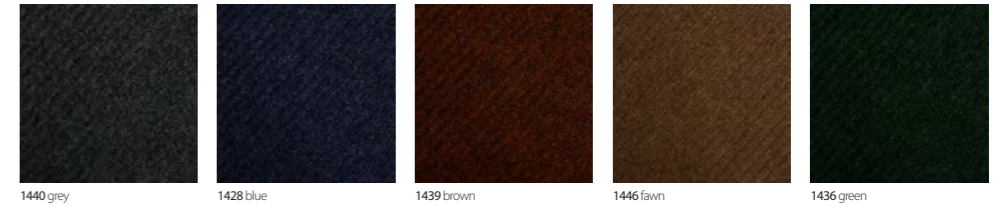


armour

armour uses the latest yarn technology to maximise moisture absorption, actively scrape away dirt, and provide heavy duty performance. This enables **armour** to remove up to 90% of the dirt and moisture tracked into a building, making it the ideal choice for entrance areas, lobbies, lifts and staircases. Use **armour** to make the right first impression, and to protect your interior flooring finishes.

eco₂matters®

Made from 100% Econyl® **regenerated recyclable** solution dyed nylon yarn and our unique **BioBase® recycled** backing, **armour** is **low carbon** and a considered choice for sustainable building projects.

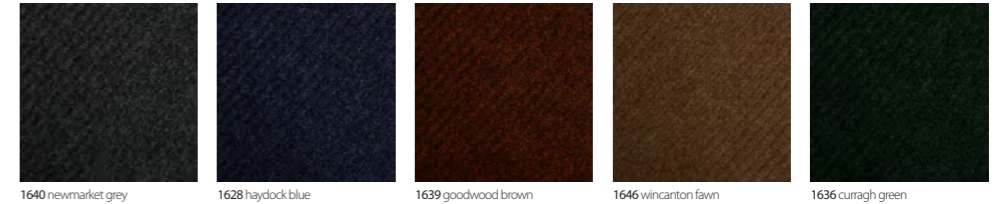


Specification

Product Description: Fibre Bonded
Pile Yarn Description: 100% Polypropylene
Roll Length: 30m
Roll Width: 2m
Total Thickness: 10.0 mm +/-10%
Total Weight: 1490 g/m² +/-10%
Colour Fastness To Light: Minimum grade 6
Flammability: Euroclass Ef1-s1

7700 grimebuster

7700 grimebuster is a heavy contract ribbed fibre bonded carpet. It is ideal for withstanding heavy footfall environments and creating an effective dirt barrier for busy entrances, which lead directly from outside environments.



Specification



Product Description: Fibre Bonded
Pile Yarn Description: 100% Polypropylene
Tile Dimensions: 50 cm x 50 cm
Total Thickness: 12.0 mm
Pile Weight: 1170 g/m²
Total Weight: 4300 g/m²
Colour Fastness To Light: Minimum grade 6
Flammability: Euroclass Bfl-s1

grimebuster 50

grimebuster 50 is a heavy contract fibre bonded carpet tile with a deep diagonal rib surface.

It is ideal for withstanding heavy footfall environments and creating an effective dirt barrier for busy entrances, which lead directly from outside environments.





withstands heavy traffic



protects



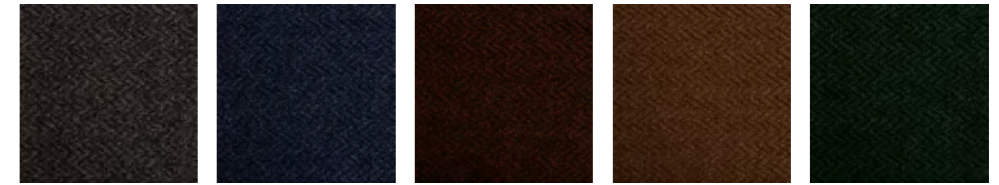
withstands heavy traffic



protects



BioBase® backing



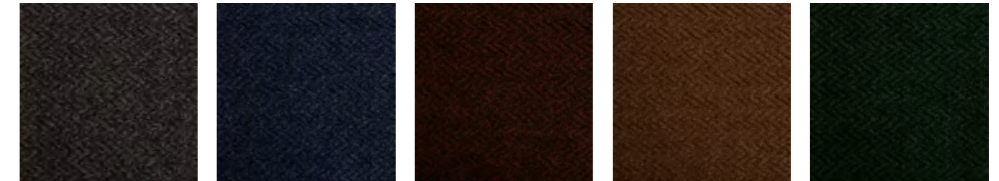
7840 charcoal 7828 blue 7839 brown 7846 fawn 7836 green

Specification

Product Description: Fibre Bonded
 Pile Yarn Description: 100% Polypropylene
 Roll Length: 30m
 Roll Width: 2m
 Total Thickness: 10.0 mm +/-10%
 Total Weight: 1490 g/m² +/-10%
 Colour Fastness To Light: Minimum grade 6
 Flammability: Euroclass Ef1-s1

7800 chevrolay

7800 chevrolay is a heavy contract chevron ribbed fibre bonded carpet. It is ideal for withstanding heavy footfall environments and creating an effective dirt barrier for busy entrances, which lead directly from outside environments.



6240 alpha grey 6228 beta blue 6239 theta brown 6246 kappa fawn 6236 gamma green



Specification

Product Description: Fibre Bonded
 Pile Yarn Description: 100% Polypropylene
 Tile Dimensions: 50 cm x 50 cm
 Total Thickness: 12.0 mm
 Pile Weight: 1490 g/m²
 Total Weight: 4300 g/m²
 Colour Fastness To Light: Minimum grade 6
 Flammability: Euroclass Bfl-s1

chevrolay 50

chevrolay 50 is a heavy contract chevron ribbed fibre bonded tile with deep chevron design.

It is ideal for withstanding heavy footfall environments and creating an effective dirt barrier for busy entrances, which lead directly from outside environments.

characteristics of the products

Name	Dimensions Rolls (R) / Tiles (T)	Product Type	Pile Description	Carpet Pile Weight g/m ²	Tile Total Weight g/m ²	Carpet Pile Height mm	Tile Total Thickness mm	Number of tufts x/m ²	Backing	Flammability EN13501	Impact Noise	Number of SKUs	Suitable for Underfloor Heating	Body Voltage kV	Wear Classification	Colour Fastness to Light BS EN ISO 105	Slip Resistant	Castor Chair EN985	Carbon Status	EPD Registration Number
arctic*	T 50cm x 50cm P 25 cm x 100 cm	Multilevel Loop	100% Nylon 6 carbon negative recycled yarn	624	4024	4.5	7	226,771	BioBase®	Bfl-S1	26 dB	12	Yes below 27°	<2.0	Class 33	>6	NPD	Pass	Carbon Neutral*	S-P-07852
alaska*	T 50cm x 50cm	Multilevel Loop	100% Econyl regenerated recycled solution dyed nylon	800	4200	5	7.5	226,771	BioBase®	Bfl-S1	22 dB	16	Yes below 27°	<2.0	Class 33	>6	NPD	Pass	Low Carbon	S-P-01830
balance grade*	T 50cm x 50cm	Multilevel Loop	100% Nylon 6 (PA)	628	4028	4.5	7	226,771	BioBase®	Bfl-S1	23 dB	12	Yes below 27°	<2.0	Class 33	>6	NPD	Pass	Carbon Neutral*	S-P-08172
balance grid*	T 50cm x 50cm	Multilevel Loop	100% Nylon 6 (PA)	628	4028	4.5	7	226,771	BioBase®	Bfl-S1	23 dB	12	Yes below 27°	<2.0	Class 33	>6	NPD	Pass	Carbon Neutral*	S-P-08172
balance ground*	T 50cm x 50cm	Multilevel Loop	100% Nylon 6 (PA)	628	4028	4.5	7	226,771	BioBase®	Bfl-S1	23 dB	12	Yes below 27°	<2.0	Class 33	>6	NPD	Pass	Carbon Neutral*	S-P-08172
dapple*	T 50cm x 50cm	Multilevel Loop	100% Nylon 6 (PA)	678	4100	5.2	7	236,220	BioBase®	Bfl-S1	24 dB	12	Yes below 27°	<2.0	Class 33	>6	NPD	Pass	Carbon Neutral*	S-P-08169
osaka*	T 50cm x 50cm	Multilevel Loop	100% Nylon 6 carbon negative recycled yarn	695	4100	5	7.5	226,771	BioBase®	Bfl-S1	22 dB	12	Yes below 27°	<2.0	Class 33	>6	NPD	Pass	Carbon Neutral*	S-P-01831
vibe*	T 50cm x 50cm	Multilevel Loop	100% Nylon 6 (PA)	774	4180	5	7.5	250,393	BioBase®	Bfl-S1	25 dB	12	Yes below 27°	<2.0	Class 33	>6	NPD	Pass	Low Carbon	S-P-08171
tiltturn*	T 50cm x 50cm	Multilevel Loop	100% Nylon 6 (PA)	770	4200	5	7.5	259,842	BioBase®	Bfl-S1	25 dB	12	Yes below 27°	<2.0	Class 33	>6	NPD	Pass	Low Carbon	S-P-08170
rainfall*	T 50cm x 50cm	Multilevel Loop	100% Econyl Nylon	910	4300	5	7.5	236,220	BioBase®	Bfl-S1	24 dB	12	Yes below 27°	<2.0	Class 33	>6	NPD	Pass	Low Carbon	S-P-01832
tivoli*	T 50cm x 50cm P 25 cm x 100 cm	Level Loop	EquoBalance® sustainable yarn, soultion dyed nylon	600	4050	4	6.5	196,500	BioBase®	Bfl-S1	23 dB	40	Yes below 27°	<2.0	Class 33	>6	NPD	Pass	Low Carbon	S-P-01825
tivoli mist*	T 50cm x 50cm P 25 cm x 100 cm	Level Loop	EquoBalance® sustainable yarn, soultion dyed nylon	600	4050	4	6.5	196,500	BioBase®	Bfl-S1	23 dB	10	Yes below 27°	<2.0	Class 33	>6	NPD	Pass	Low Carbon	S-P-01825
go to*	T 50cm x 50cm	Level Loop	EquoCycle® 75 recycled solution dyed nylon	500	3810	3.0	5.5	196,850	BioBase®	Bfl-S1	20 dB	20	Yes below 27°	<2.0	Class 33	>6	NPD	Pass	Low Carbon	S-P-08174
infinity*	T 50cm x 50cm	Level Loop	100% Econyl Nylon	550	4000	4.3	6.8	177,165	BioBase®	Bfl-S1	23 dB	16	Yes below 27°	<2.0	Class 33	>6	NPD	Pass	Low Carbon	S-P-01827
supercordiale*	T 50cm x 50cm	Fibre Bonded Tile	80%P 15%N 5%RP	900	4200	6	7.8	-	BioBase®	Bfl-S1	18 dB	40	Yes below 27°	<2.0	HC	>6	NPD	Pass	Low Carbon	S-P-01835
supercordiale*	R 2m x 30m	Fibre Bonded Sheet	80%P 15%N 5%RP	900	900	6	-	-	Uniform	Bfl-S1	18 dB	40	Yes below 27°	<2.0	HC	>6	NPD	Pass	Low Carbon	S-P-01843
4200 sidewalkFR	R 2m x 30m	Fibre Bonded Sheet	85%PP 15%PA	950	950	6	-	-	Uniform	Bfl-S1	18 dB	32	Yes below 27°	<2.0	HC	>6	NPD	Pass	Low Carbon	S-P-01843
academy*	T 50cm x 50cm	Fibre Bonded Tile	80%P 15%N 5%RP	950	4050	6.5	7.5	-	BioBase®	Bfl-S1	21 dB	24	Yes below 27°	<2.0	HC	>6	NPD	Pass	Low Carbon	S-P-01835
academy*	R 2m x 30m	Fibre Bonded Sheet	80%P 15%N 5%RP	-	950	6.5	5.5	-	Uniform	Bfl-S1	19 dB	24	Yes below 27°	<2.0	HC	>6	NPD	Pass	Low Carbon	S-P-01843
4400 roadwayFR	R 2m x 30m	Fibre Bonded Sheet	85%PP 15%PA	940	940	6.5	-	-	Uniform	Bfl-S1	19 dB	32	Yes below 27°	<2.0	HC	>6	NPD	Pass	Low Carbon	S-P-01843
velour excel	T 50cm x 50cm	Fibre Bonded Tile	85%PP 15%PA	1200	4900	8	10	-	BioBase®	Bfl-S1	21 dB	18	Yes below 27°	<2.0	HC	>6	NPD	Pass	Low Carbon	S-P-01836
5500 luxury	R 2m x 30m	Fibre Bonded Sheet	85%PP 15%PA	1150	1150	6.5	-	-	Uniform	Dfl-S1	21 dB	18	Yes below 27°	<2.0	HC	>6	NPD	Pass	Low Carbon	S-P-01844
lateral*	T 50cm x 50cm	Structure Bonded	85%PP 15%PA	950	4200	5.5*	7.8	-	BioBase®	Bfl-S1	18 dB	18	Yes below 27°	<2.0	HC	>6	NPD	Pass	Low Carbon	S-P-01837
code	T 50cm x 50cm	Structure Bonded	85%PP 15%PA	1000	4250	5.5*	8	-	BioBase®	Bfl-S1	17 dB	11	Yes below 27°	<2.0	HC	>6	NPD	Pass	Low Carbon	S-P-01838
origin*	T 50cm x 50cm	Cut Pile	100% Econyl Nylon	1300	4550	7	9.5	165,354	BioBase®	Bfl-S1	28 dB	10	Yes below 27°	<2.0	Class 33	>6	NPD	Pass	Low Carbon	S-P-08175

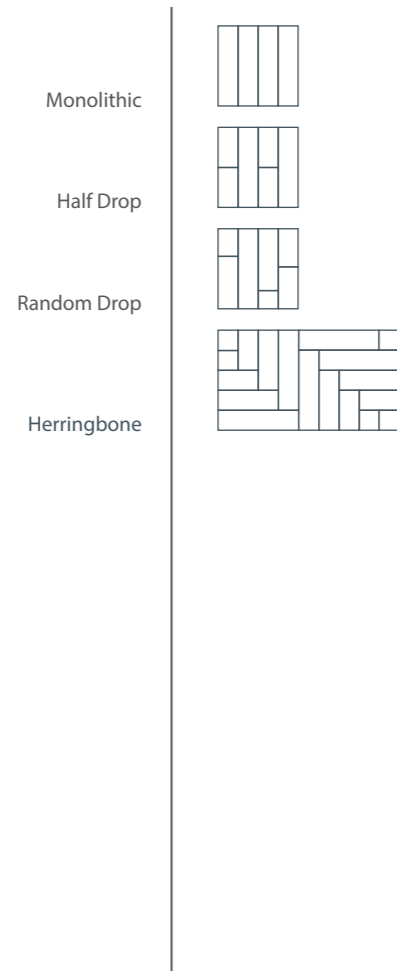
entrance matting

Name	Dimensions Rolls (R) / Tiles (T)	Product Type	Pile Description	Carpet Pile Weight g/m ²	Total Weight g/m ²	Thickness mm	Backing	Flammability EN13501	Number of SKUs	Wear Classification	Colour Fastness to Light BS EN ISO 105	Slip Resistant	Carbon Status	EPD Registration Number
armour	T 50cm x 50cm	Cut Pile	100%PA	920	4500	10	BioBase®	Bfl-S1	6	Class 33	>6	DS	Low Carbon	S-P-01833
7700 grimebuster	R 2m x 30m	Fibre Bonded Sheet	100% PP	-	1490	10	Uniform	Efl-S1	5	HC	>6	NPD	Low Carbon	S-P-01845
grimebuster 50	T 50cm x 50cm	Fibre Bonded Tile	100% PP	1490	4300	12	BioBase®	Bfl-S1	5	HC	>6	NPD	Low Carbon	S-P-01840
7800 chevrolay	R 2m x 30m	Fibre Bonded Sheet	100% PP	-	1490	10	Uniform	Efl-S1	5	HC	>6	NPD	Low Carbon	S-P-01845
chevrolay 50	T 50cm x 50cm	Fibre Bonded Tile	100% PP	1490	4300	12	BioBase®	Bfl-S1	5	HC	>6	NPD	Low Carbon	S-P-01840

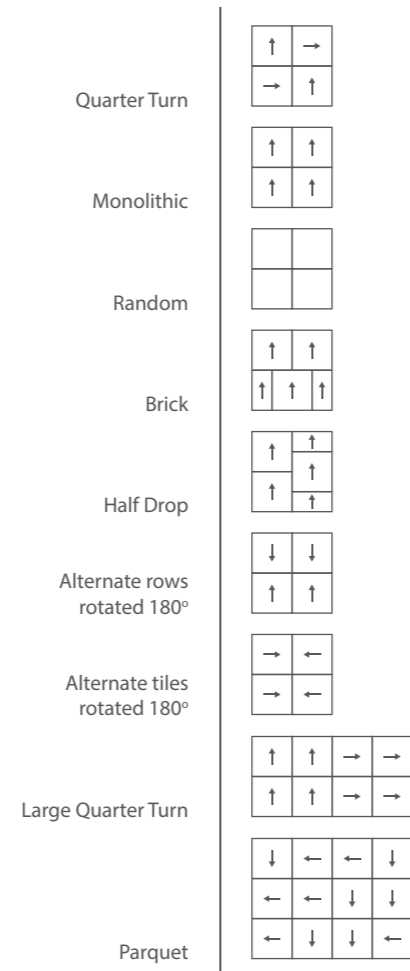
* Made from Universal Fibers® Thrive® matter yarn, the world's first carbon negative recycled yarn, and our unique BioBase® recycled backing.

Installation

Plank installation methods



Tile installation methods



Appendix

2	Burmatex®	39	cordiale
7	arctic	39	4200
9	alaska	41	academy
11	balance grade	41	4400
13	balance grid	43	velour excel
15	balance ground	43	5500 luxury
17	dapple	45	lateral
19	osaka	47	code
21	vibe	49	origin
23	tiltnturn	51	armour
25	rainfall	53	7700 grimebuster
27	tivoli tile	53	grimebuster 50
31	tivoli plank	55	7800 chevrolay
33	tivoli mist	55	chevrolay 50
35	go to	56	characteristics of the products
37	infinity	58	installation

Burmatex[®]

MANUFACTURERS OF CREATIVE FLOORING 

Head Office

Victoria Mills, The Green
Ossett
West Yorkshire
WF5 0AN
United Kingdom

Tel: +44 (0) 1924 262525
Fax: +44 (0) 1924 280033
Email: projects@burmatex.co.uk
Web: www.burmatex.co.uk

International Enquires

international@burmatex.co.uk

Eastern Europe Office

Burmatex
Andersia Business Centre
Plac Andersa 7
61-894 Poznań, Poland

Tel: + 48 61 668 3883
Mob: + 48 603 548 074
Mob: + 48 696 057 065
email: biuro@burmatex.pl

eco₂matters[®]